



MAIHI Ka Ora

The National Māori Housing Strategy

Rautaki



Te Tūāpapa Kura Kāinga
Ministry of Housing and Urban Development



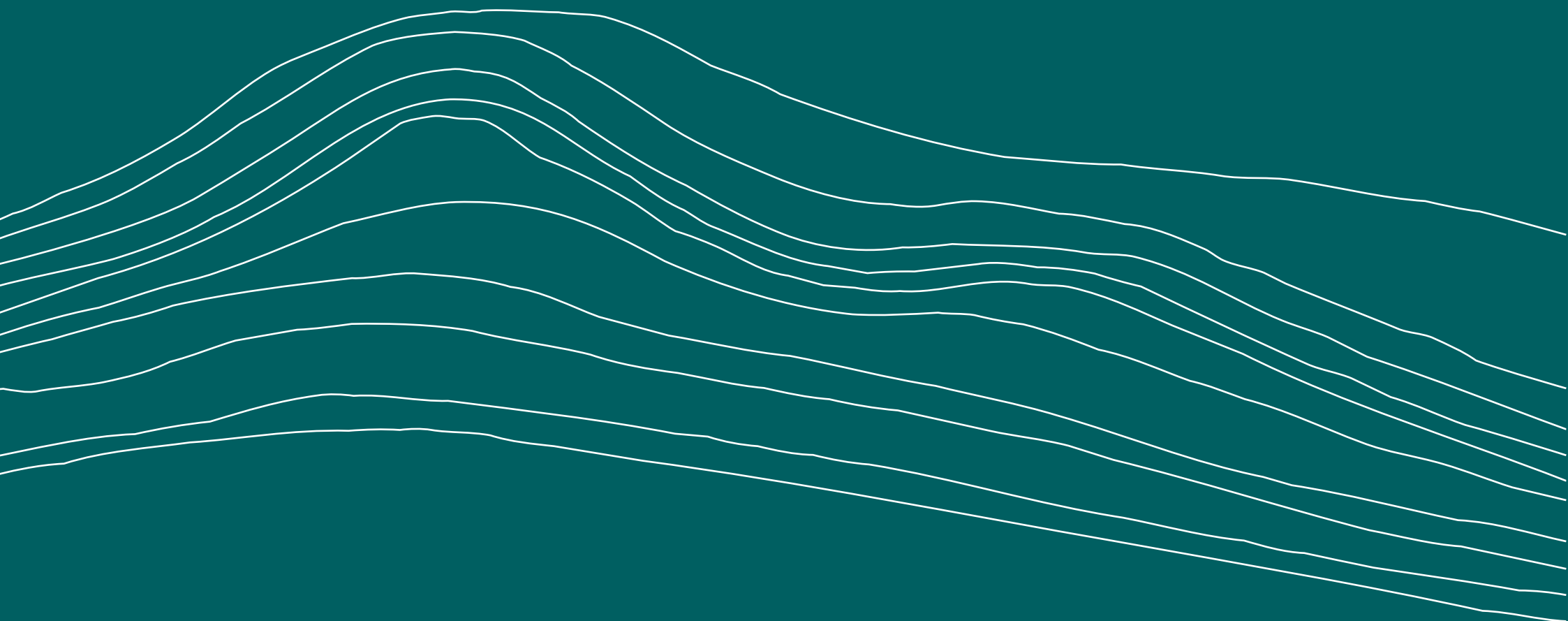


**Maaku anoo e hanga i tooku nei whare, ko ngaa poupou
He maahoe, he patatee, ko te taahuuhuu he hiinau.**

*He tongikura naa Kiingi Taawhiao
- (Tuukaaroto Matutaera Pootatau Te Wherowhero Taawhiao)*

*Teenei te au o mihi e rere atu ana ki ngaa taiheke o Waikato-Tainui, otiraa ki a koe e Raahui i
too koutou whakaaetanga mai kia noho teenei tongikura hei kupu tuatahi moo teenei rautaki.*





He mea whanake, ārahi hoki tēnei rautaki e Te Puni Kōkiri
me ngā umanga puta noa i te Kāwanatanga. E mihi ana
ki a rātau i ā rātau homaitanga ki tēnei rautaki.

Kupu whakataki a te Minita



E mārama ana, ki te Māori, te hirahiratanga o te hoki ki te kāinga.

Ka rongō mātau i te kume a te ūkaipō. Kia hoki ki ō mātau iwi. Kia kotahi anō me te whānau, kia ū tonu te hononga ki te whenua.

Hei tā mātau, he hanganga ōkiko, he hanganga whānau hoki te kāinga. He tāngata, he wāhi hoki.

Koinā i torowhānui ai te anga a Te Rautaki Whai Whare Māori hou ki ngā take kāinga. Ka hua ake i te mōhio he wāhanga noa iho te kāinga utu-pai, haumarū, hauora hoki, o te urupare ki te mōreareatanga e noho nei tātau. Me hāngai te ora o ngā mea i roto i te kāinga, o te whānau, ki te whare whakaahuru i a rātau.

Hei Minita Tūhono Kāinga – Kāinga Māori, nōku te whiwhi kua whai wāhi atu ahau ki tā mātau Rautaki Whai Whare Māori ā-Motu hou, kua tapaina ki te ingoa 'MAIHI Ka Ora'.

Kia tōaitia te kōrero 'i whai wāhi atu' ahau i te mea he rautaki tēnei i ahau mai i te pai o te mahitahi ki ngā Māori.

He tuinga ka whakaatu i ngā hiahia o ngā Māori, te wāhi ki te Karauna me ngā whāinga hei whakatutuki mā te mahitahi.

Me mihi ahau ki ngā rau ringa i oti ai tēnei rautaki – ki te National Iwi Chairs Forum, ngā hapū, ngā iwi, ngā kaiwhakarato kāinga Māori me te MAIHI Whare Wānanga. Ka nui taku mihi ki te Matapihi he tirohanga mō te iwi Trust me Wayne Knox, i ana pūkenga ārahi me tana tautoko i tēnei mahi nui.

Nā te Māori tonu mātau i tohu kia kotahi atu ki te urupare i te mōreareatanga ā-kāinga e noho nei tātau i te wā nei, heoi kia pae tawhiti hoki te titiro, kia whakarite whāinga mō te āpōpō o ngā āhuatanga kāinga Māori, ā, kia mātua whakatakoto ara e tae atu ai tātau katoa ki reira.

Kei te mōhio tātau ki ngā tatauranga. Te hunga Māori e noho kāinga-kore ana, te hunga me uaua ka kite i tētahi kāinga utu-pai, te tokomaha ka whakaaro ake he manako noa iho te hoko kāinga mō te hunga whai rawa.

Heoi anō ngā tatauranga e kite nei mātau, ngā nama ka whakamahia hei whakamārama i te āhuatanga o te mōreareatanga e noho nei tātau, he mata ō rātau. Ko ō tātau whānau. Ko ō tātau whanaunga, ō tātau kuia, ā tātau tamariki me ā rātau tamariki hoki.

Ehara noa iho tēnei rautaki i te rautaki panoni nama, whakapai tatauranga rānei. He rautaki whakapai i te oranga o ngā whānau mō tēnei rā, mō āpōpō, mō raurangi rā anō hoki.

Ka taea e tātau. Mā te mahitahi a te Māori me te Karauna, e āhei ai tātau ki te whakarite whare pai ake, kāinga pai ake, pae tawhiti pai ake hoki mō ngā whānau.

Nō reira,

Ko te pae tawhiti whāia kia tata, ko te pae tata whakamaua kia tīna

Hon Peeni Henare

Associate Minister of Housing – Māori Housing

Contents

Kupu whakataki a te Minita	01	Te uru atu ki te MAIHI Ka Ora	17
Whakatakinga	03	Te uru atu ki te MAIHI Ka Ora	18
Te Whakarewa i Te Maihi o te Whare Māori	04	Nā te taukaea kaha ko ngā hua whai whare pai ake mō ngā whānau	18
Ngā mātāpono me te anga MAIHI	06	Tā mātau mahere: urupare, arotake, whakatika	20
Ka tohu te Anga Mahi MAIHI i ngā aramahi matua e toru:	07	Tā mātau mahere	22
Ko tētahi mahi nui o MAIHI ko te whakatū i Te MAIHI Whare Wānanga	07	Whakaarotau 1: Taukaea Māori & Karauna	23
MAIHI Ka Ora: Te Rautaki Whai Whare Māori Ā-Motu	08	Whakaarotau 2: Urupare Māori Ā-Rohe	24
Te renarena i te taukaea	09	Whakaarotau 3: Putunga Whai Whare Māori	25
Ō mātau whakaarotau kotahi	11	Whakaarotau 4: Tautoko Whai Whare Māori	27
Te whakamahine i te wero kei mua i a tātau	14	Whakaarotau 5: Pūnaha Whai Whare Māori	29
Taukaea Māori & Karauna	15	Whakaarotau 6: Toitūtanga Whai Whare Māori	31
Urupare Māori ā-Rohe	15	Whakatinanatanga me te haepapatanga	33
Putunga Whai Whare Māori	15	Āpitianga: He kimonga ki ngā tatauranga whai whare Māori	35
Tautoko Whai Whare Māori	15	Ngā taunakitanga ā-Kāwanatanga i whakamahia e te Māori tae rawa	36
Pūnaha Whai Whare Māori	15	atu ki te Poutūterangi 2021	36
Toitūtanga Whai Whare Māori	16	Kaiwhakarato whare	36
He aha i mātua aro ai mātau ki ēnei wāhanga whakaarotau: te pānga ki te hauora o te whānau	16	Te hoko kāinga	36
		He kāinga mahana, he kāinga maroke	38
		Noho Kōpā	38
		Ngā Tatauranga Whakatiki Whai Whare Patapatai Youth19	39
		He iti te wāhi ki ngā rawa matua o ia rā i ngā whare	40
		Whakatikitanga Whai Whare Kino Rawa Atu – Pipiri 2021 ngā whakahounga ki ngā tatauranga 2018	40

Whakatakinga

Ko te whakakitenga kotahi o Maihi Ka Ora, o te Rautaki Whai Whare Māori ā-Motu, “Kia whai kāinga haumaruru, hauora, utu-pai hoki ngā whānau, ā, kia pūmau te noho puta noa i te horopaki whai whare Māori.”

Ka whakamahia ko Te Maihi o te Whare Māori – te Kaupapa Anga Mahi Mō Ngā Kāinga a te Māori me ngā Iwi (MAIHI), he kaupapa whai i te ara pūnaha maha, ka mutu ka whakarewa i te anga rā hei whakarite ahunga rautaki mō te katoa o te pūnaha whai whare Māori.

I roto i ngā tau maha me ngā panonitanga maha, kua kite, kua ngana hoki te Kāwanatanga ki te whakatika i ngā wero whai whare mō te Māori, ngā iwi, ngā hapū me ngā whānau hoki.

Kua whakarārangihia e Te Rōpū Whakamana i Te Tiriti o Waitangi, i tana pakirehua, i Wai 2750 Kaupapa, ki ngā Ratonga me ngā Kaupapa Here Whai Whare Māori, te pānga o ngā urupare kiko-kore ki ngā take whai whare Māori i roto i ngā tau maha, me te aha, he pānga ā-reanga tō ērā take ki ngā haporī Māori, he pānga ka rangona tonutia i ēnei rangi nei.

Ehara te iti o ngā putunga whare hou, te koretake o te kounga o ngā whare o te wā nei me te korenga o te Māori

i āhei ki te rēti, hoko whare rānei, nā te nui o te utu, i te raru hou, engari he raru kua rewa nā te kino haere o te mōreareatanga whai whare me ngā pānga o te KOWHEORI-19.

E whai-kiko ai ngā urupare ki ngā wero nui i te ao whai whare Māori, me urupare, me arotake, me whakatika hoki i te pūnaha. Me mutu tā tātau whai i ētahi hua whai whare rerekē mō te Māori i tētahi pūnaha kua roa rawa e whakataha ana i te Māori.

Koinā i rerekē ai te aronga o tēnei rautaki.

Ehara noa iho a MAIHI Ka Ora i tētahi rautaki nā te kāwanatanga mō ngā take whai whare Māori. He rautaki i waihanga tahitia ai me ngā Māori i te rāngai whare. Me mātua mahitahi te Māori me te Karauna, i runga i te whakaaro tahi, hei whakatinana i a ia. Ka whakamahia ko Anga Mahi MAIHI, he kaupapa whai i te ara pūnaha maha, ka mutu ka whanake i te anga rā hei whakarite ahunga rautaki mō te katoa o te pūnaha whai whare Māori.

He whakapuakitanga te rautaki hou o ngā atikara o Te Tiriti o Waitangi.

I te rautaki nei, ka whakamahi te Kāwanatanga i ōna ringa (Atikara tuatahi) hei whakamana i ngā whakataunga whai whare ā-rohe, nā te Māori tonu i kōkiri, hei whakatutuki i ngā manako whai whare Māori. Ki te tika te mahi tahi a ngā ringa e rua o Te Tiriti, ka hua ake i te rautaki ko te ōritetanga (Atikara tuatoru).

I ngā tau 30 e haere ake nei, ka ngana te taukaea Māori me te Karauna ki te panoni i ētahi āhuetanga hei whanake i ngā hua whai whare mō ngā reanga Māori e heke mai nei, ō rātau whānau me ā rātau mokopuna.

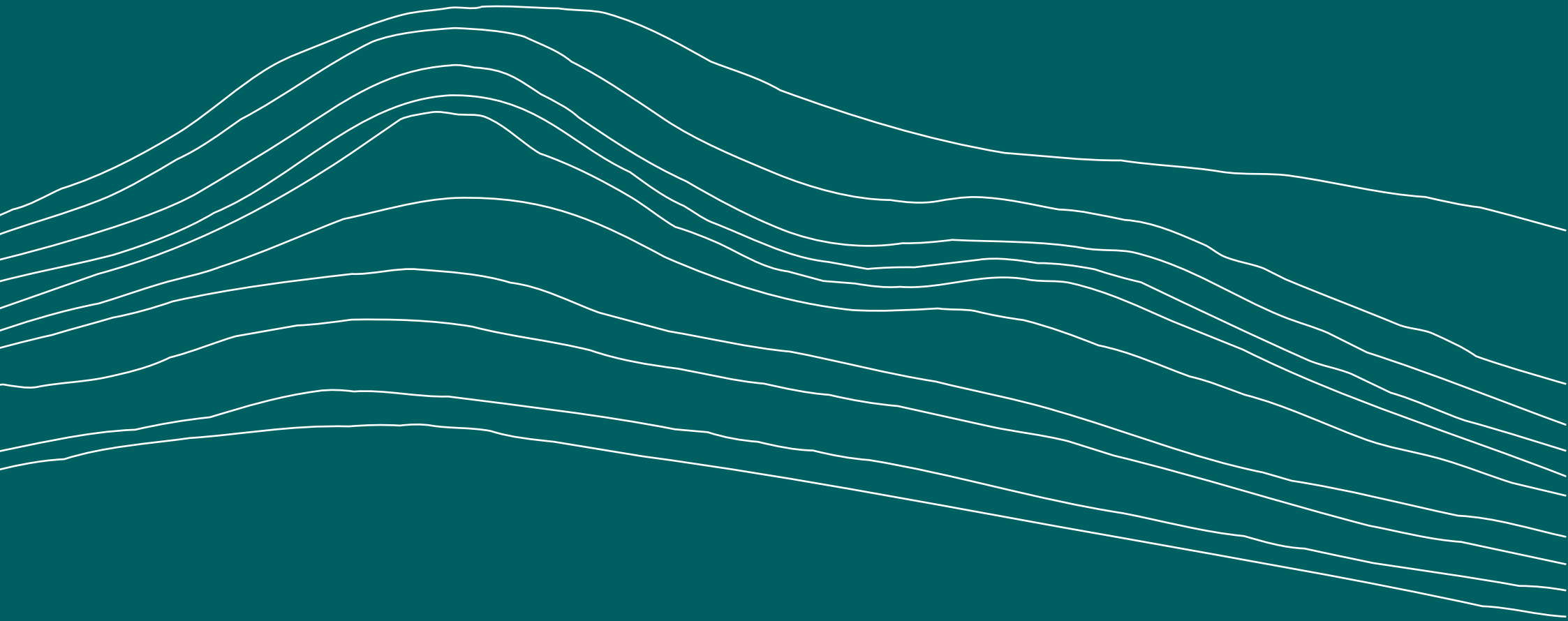
Ka whakatewhatewha te rautaki hou i ngā raru, ka whakarite mahi hei whakaea i ngā raru, waihoki, ētahi mahi, angawā hoki hei whakatutuki i ngā mahi, hei panoni hoki i te pūnaha kia whakatinanahia ngā manako o te katoa, kia whanake hoki te hauora o ngā whānau.

Ko tā te rautaki hou he titiro ki tētahi raru whīwhiwhi, me tētahi pūnaha kongakonga – me te whakangāwari. Hei whakatutuki i tēnei, me whakapau kaha puta noa i te whānuitanga o ngā mahi whai whare i roto i te kāwanatanga, me ngā rōpū Māori, iwi, hapū anō hoki.

E kore ā mātau mahi e noho wehe i ngā mahi whai whare whānui a te Kāwanatanga, ngā Māori, ngā iwi me ngā hapū anō hoki. Kua hangaia tahitia te rautaki me te Tauākī Kaupapa Here a te Kāwanatanga mō te Whakawhanake Whare, Tāone anō hoki kia kotahi ai ngā aronga, ngā mahi me ngā manako, e hua ake ai ko tētahi pūnaha whai whare pai ake.

Ka whakaū tēnei i te whakaaro, ehara i te mea ko te rautaki whai whare Māori anake ka whai hua mō te Māori – engari ka rite te pūnaha ki te whai ōritetanga, mana tauritenga hoki puta noa i te horopaki whai whare, ka mutu, ka noho ko te whānau te tūāpapa.

Te Whakarewa i Te Maihi o te Whare Māori



Mōhio nei tātau, nā *He Whare Āhuru He Oranga Tāngata*, e kore ngā ngoikoretanga o te Karauna i roto i ngā tau maha e ea mā roto mai i tētahi 'anga' kāore i tino whāia, mā te whakaū rānei i ngā āhuatanga o te wā. Me whai wāhi atu a MAIHI ki te whānuitanga o te pūnaha whai whare, ka mutu, me whai mahi hāngai ka tautokohia e te hunga tika i waenganui i te Karauna me te Māori.

Nā te aronga o te pūnaha MAIHI i āhei ai mātau ki te aro ki te whānuitanga o ngā kaupapa here, ngā hōtaka me te whakangao a te kāwanatanga ki ngā āhuatanga whai whare. Wātea ana mātau ki te tuitui hononga puta noa i te pūnaha i waenganui i ngā kaupapa here me ngā hōtaka, waihoki ngā tāngata.

He nui ake a MAIHI i ngā hua ka tukuna mō te rāngai whai whare Māori – ko te āhua hoki o te tuku. He nui ngā hua kua puta mai i tā mātau ara mahi hou e hāngai ana ki ngā raru o te wā me ngā raru ka puta mai – hei tauira kua whai aronga kaupapa Māori te Rautaki Mahi Kāinga Koretanga, kua whanake ngā āhuatanga mahi i Waingākau (Heretaunga), ā, kua tere ake ngā

urupare ki ngā āhuatanga kāinga koretanga i Rotorua, e mahi hāngai ana ki ngā kaiwhakarato whare Māori mā te mahitahi i roto i te pūnaha.

Kua angitū a MAIHI i tana whai ki te panoni i te pūnaha e pai ake ai ngā hua mō te Māori. Koinā i whanakehia ai a MAIHI e te rautaki whai whare Māori hou kia rewa ki tētahi taumata atu anō.

Ehara i te mea ko ngā panonitanga ki te āhua tuku i ngā hua whai whare Māori te ito o MAIHI, engari ka whakamahia ko ana mātāpono me tana anga hei ārahi i te anga whakamuatanga o ngā āhuatanga whai whare Māori mō ngā tau toru tekau e heke mai nei.



“He nui ake a MAIHI i ngā hua ka tukuna mō te rāngai whai whare Māori – ko te āhua hoki o te tuku.”

Ngā mātāpono me te anga MAIHI

Ka tohu ngā mātāpono o MAIHI i Te Mauri o te whānau hei tūāpapa mō ā mātau urupare katoa – ka noho ko te mauri o te whānau hei tūāpapa whakatipu kaha, manawaroa hoki.

Mauri

Enabling the life force, an essence for revival and fulfilment to be sustained in wellbeing.

Tikanga

Doing things right, being in the right place at the right time.

Whakamana

Empowering whānau intergenerationally.

Te Mauri o te whānau

Whanaungatanga

Delivery services for Māori through a whakapapa lens.

Manaakitanga

Key mechanisms of engaging and building relationships.

Tino Rangatiratanga

Self-Determination of self-sufficiency through creating your own sense of belonging.



He kaupapa whai i te ara pūnaha maha a MAIHI. Ka whakatō ia i te haepapatanga o te mahitahi puta noa i ngā umanga kāwanatanga hei whakaterere i ngā hua whai whare Māori, hauora Māori anō hoki.

Ka kī, e whai hua ai tā te Kāwanatanga hōtaka whai whare mō te Māori me:

▲ Mahitahi ki te Māori ▲ Whakamahi i ngā aronga kaupapa Māori ▲ Whai i te aronga pūnaha tika

Ka tohu te Anga Mahi MAIHI i ngā aramahi matua e toru:

Urupare:

whakaterere i te āwhina mō ngā whānau kāinga kore me ngā whānau e rongono ana i ngā āmaimai whai whare.

Arotake:

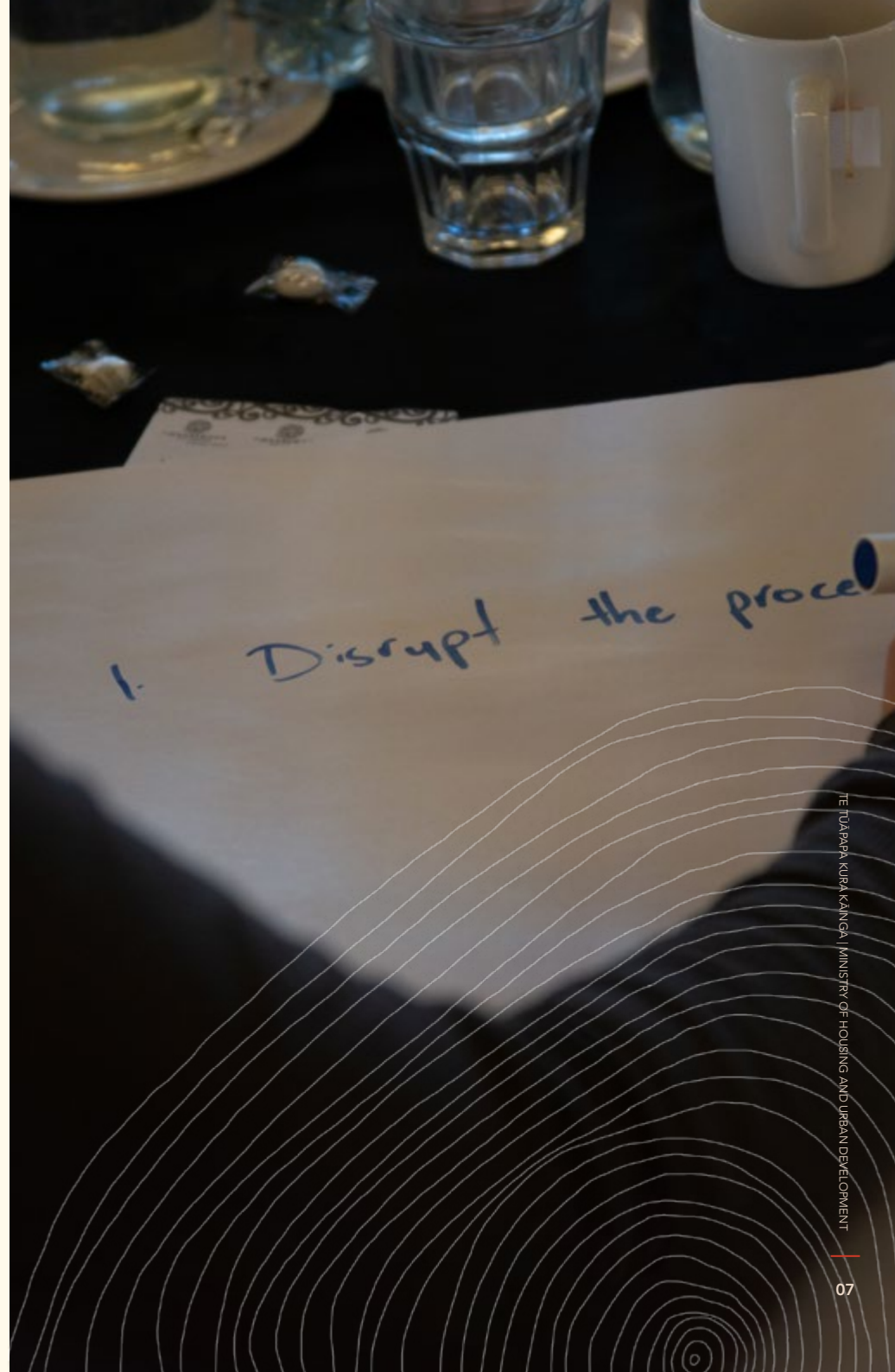
arotake i ngā kaupapa here, te ture, ngā hōtaka hei tātari i te whāititanga i te pūnaha, ngā wero nui me ngā whakamanatanga tamō ka tuki ki ngā hiahia me ngā manako whai whare o ngā Māori me ngā iwi.

Whakatika:

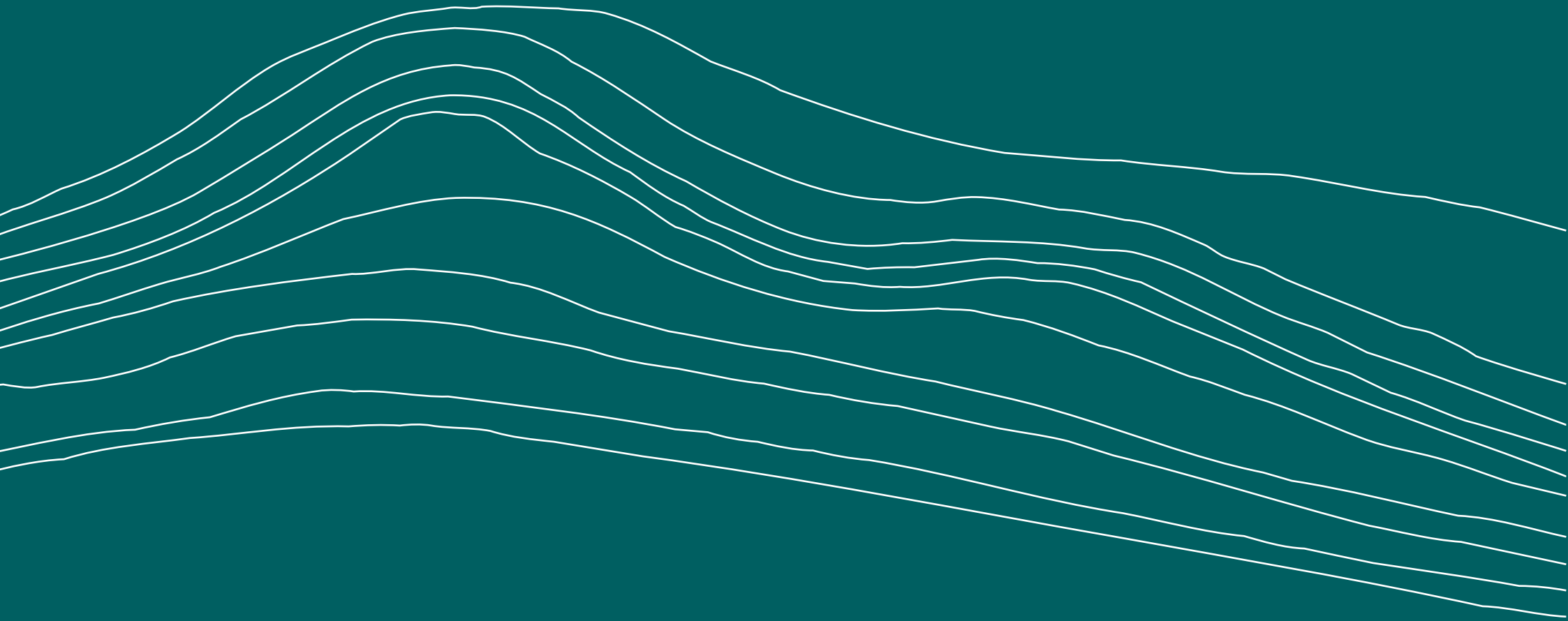
whakatika i ngā pūnaha me ngā hātepe. Kei te ārahi ngā Māori i ngā whakataunga whai whare auaha e whakatutuki ana i ngā hiahia me ngā manako o ngā whānau Māori. Ko ā mātau mahi whakaterere urupare, i te taha o te Māori, he waka kawē i ēnei auahatanga ki te pūnaha hei huti i ngā tōritenga kia puāwai mai ko ngā manako o ngā Māori.

Ko tētahi mahi nui o MAIHI ko te whakatū i Te MAIHI Whare Wānanga

Ka whakakotahi mai a Te MAIHI Whare Wānanga i ngā māngai o te rāngai whai whare Māori me ngā āpiha o te Karauna ki te mātai i te tukutanga o te Anga Mahi MAIHI, mai i te urupare i te tairaru whai whare o te wā nei kei mua tonu i te Māori, ki te arotake me te whakatika i te pūnaha pae tawhiti e hua ake ai ko ētahi urupare manatika mō te Māori.



MAIHI Ka Ora: Te Rautaki Whāi Whare Māori Ā-Motu



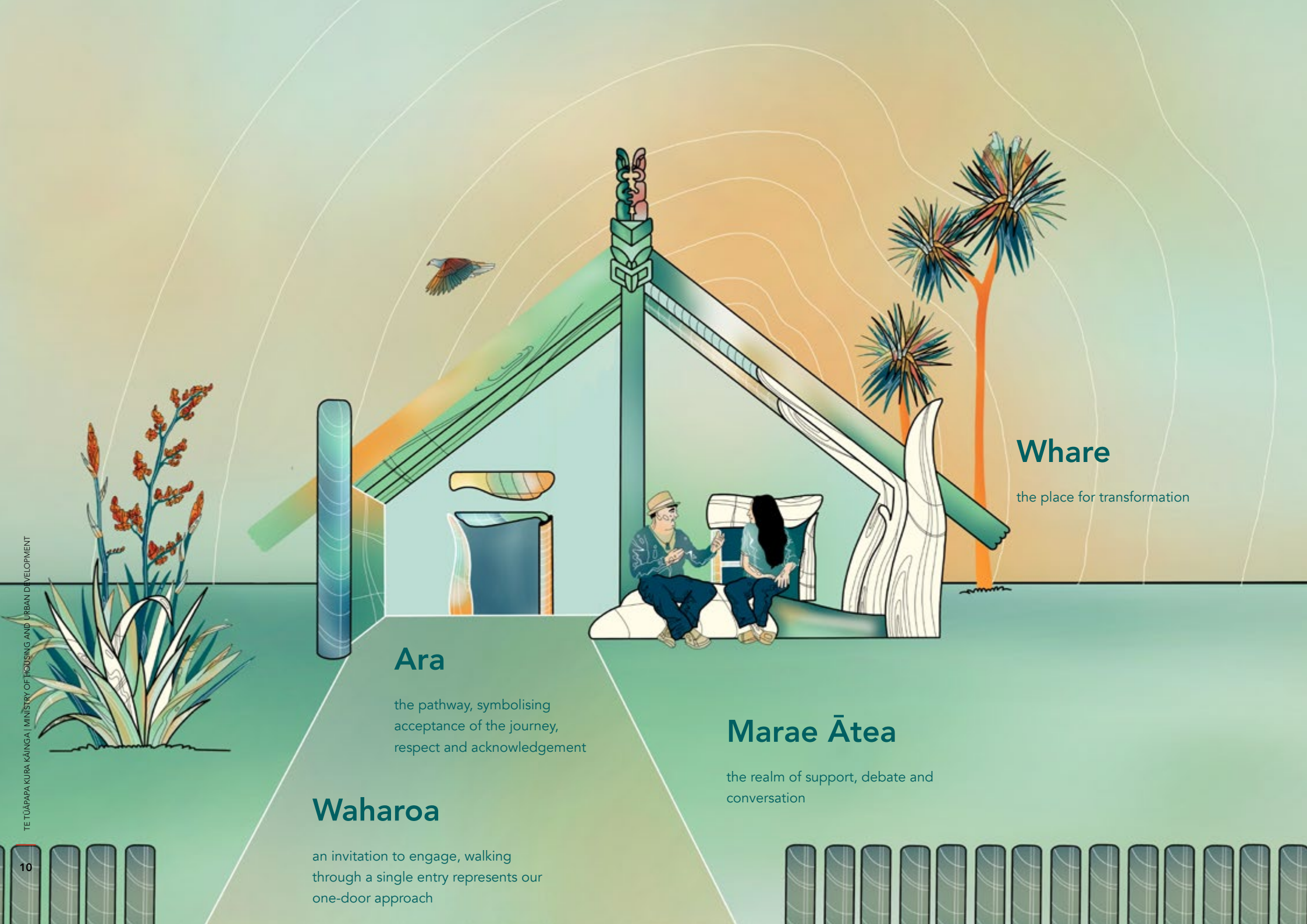


Hāngai ana a MAIHI Ka Ora ki te anga o te Wharenui. Ko te marae ātea me ōna āhuetanga katoa te wāhi mahitahi a te Karauna me te Māori, he wāhi tohatoha i ngā whakaarotau whai whare, ā, he wāhi karawhiu tahi i ngā mahi e koke whakamua ai te katoa ki te whakakitenga kotahi me ngā manako whai whare mō te Māori i ngā tau 30 e haere ake nei.

Te renarena i te taukeaa

E whai-kiko ai ngā urupare ki ngā wero nui i te rāngai whai whare Māori – me karawhiu i runga i te whakaaro tahi, te Māori me te Karauna. E kore e tutuki i te Karauna me te Māori ngā panonitanga e tika ana i tōna kotahi, nā te nui o te mōreareatanga, me mahitahi. E tohu ana te whare i tēnei whakaahua i te wāhi whakakotahi i te Karauna me te Māori, ā mohoā noa nei, kua noho te Māori me te Karauna i runga i te marae ātea – te wāhi whirinaki. Anei te wāhi whakatika i a tātau anō e pai ai tā tātau tomo i te whare.

Ko te marae ātea te wāhi i hoki ai a mahara me te kapo i ngā akoranga o te hunga o mua atu, ka mutu, koinā hoki te wāhi i āhei ai mātau ki te whanake me te whakatinana i a MAIHI, te tomokanga ki ngā panonitanga ki te pūnaha whai whare.



Whare

the place for transformation

Ara

the pathway, symbolising acceptance of the journey, respect and acknowledgement

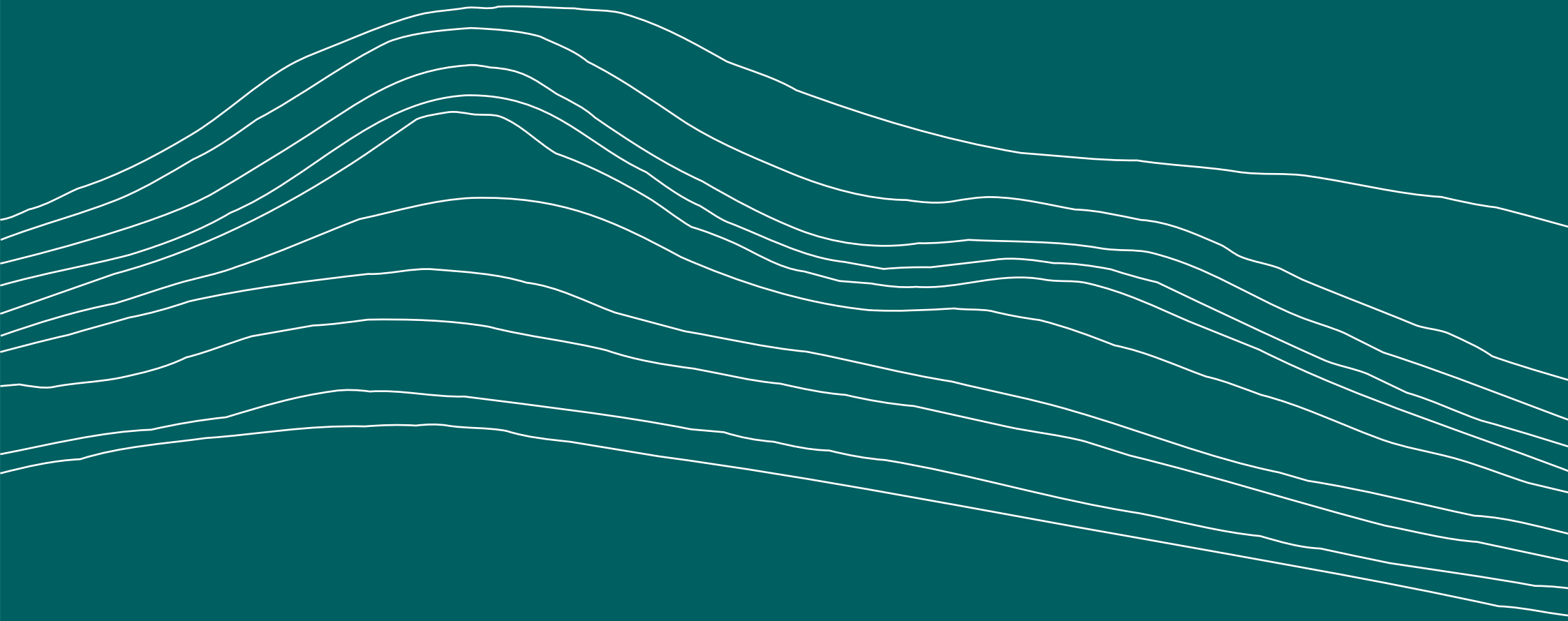
Marae Ātea

the realm of support, debate and conversation

Waharoa

an invitation to engage, walking through a single entry represents our one-door approach

Ō mātau whakaarotau kotahi



Ō mātau whakaarotau kotahi

I hangaia mai ai, i whakatinananahia ai hoki a MAIHI mā roto mai i ngā wānanga. Nā konei i rite ai ngā hoa ki te whakatū i te marae.

E rima ngā pou i te tuarongo o te whare, e whakakanohi ana i ngā wāhanga whakaarotau kotahi. Whai tūāpapa ana ngā pou i te mahitahi a te Māori me te Karauna, ā, he mea whītiki a runga e te MAIHI Whare Wānanga.

Kei muri ēnei pou i te mea me tīmata te rautaki i reira, ka kōkiri whakamua ai.

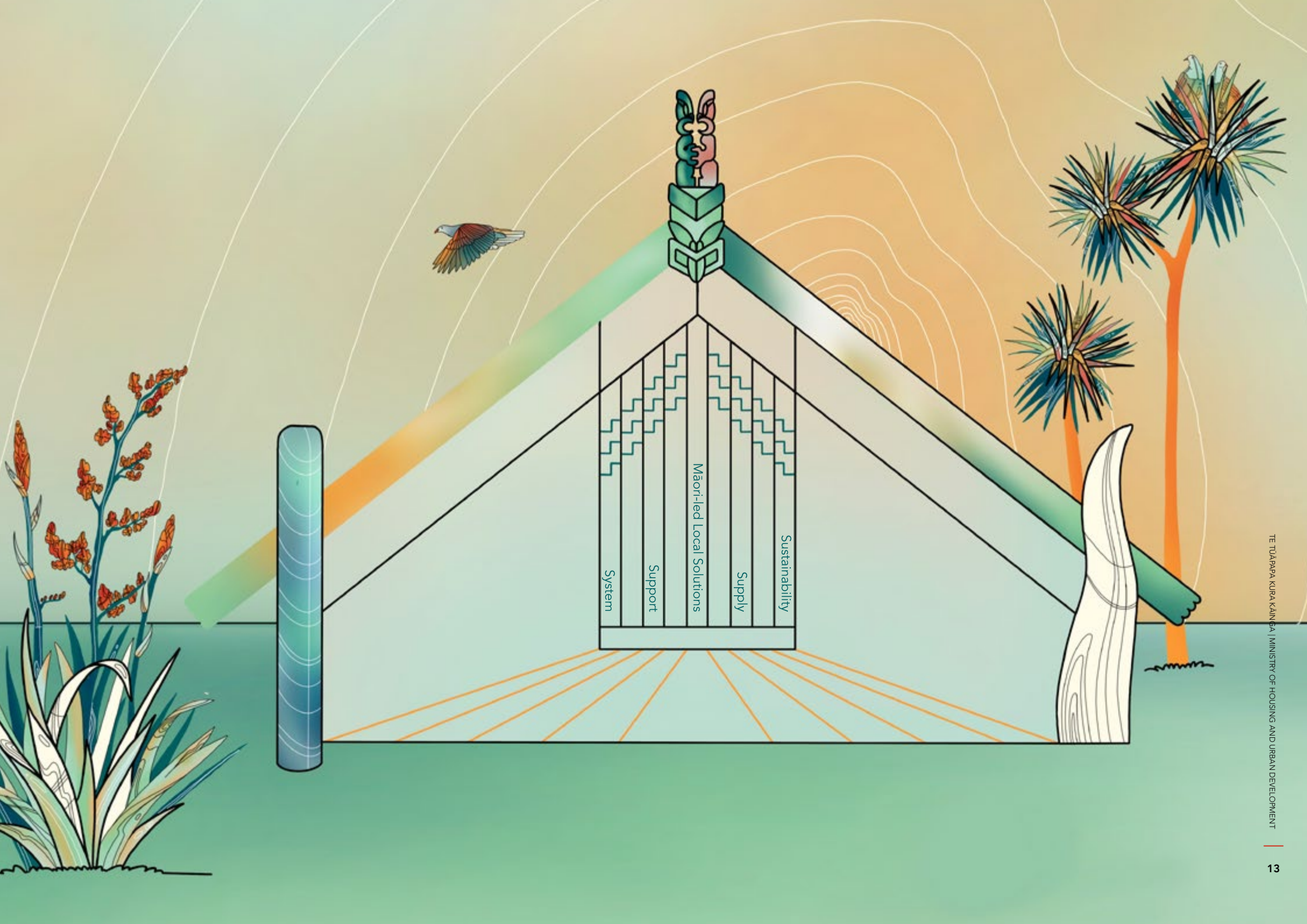
E whakakanohi ana ngā poutama i muri i ngā pou, i ngā whānau me tā rātau whakawhiti i roto i te rārangi wā whai whare. He nui te hirahiratanga o te whānau i te whare, he whakamaharatanga pai kia noho te whānau hei tūāpapa mō ā tātau mahi katoa.

E whakakanohi ana ngā taumata o te poutama i ngā taumata whakawhitinga a ngā whānau i te rārangi wā whai whare Māori.

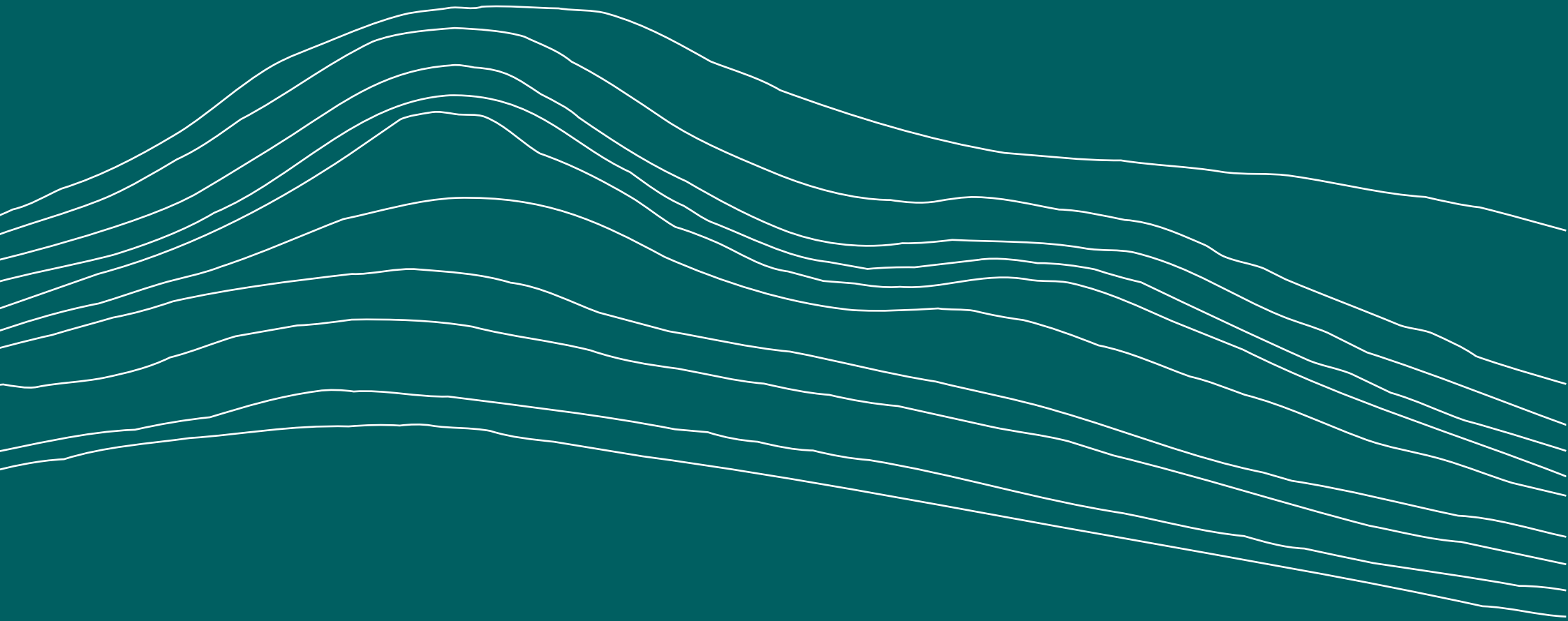
- **He Whare Āwhina, He Haumarū:** Whakarite tautoko mā ngā whānau e rongono ana i ngā pānekeneketanga whai whare
- **Kāinga Pūmanawa:** Tautoko i ngā whānau ki te whakatutuki i te whakamarumarutanga ā-kāinga, ā,
- **Pā Kari:** Tautoko i ngā whānau ki te whakatutuki i te motuhaketanga whai whare, me te whai wāhi hoki ki ngā hapori tōnui.

Me mātua hāngai ō mātau whakaarotau ki te kauneketanga o te whānau kia pai ai tō rātau āpōpō ā-whare.





**Te whakamahine
i te wero kei
mua i a tātau**





E pai ai tā te rautaki titiro ki ngā wero o nāiane me ngā wero pae tata e hāngai ana ki ngā take whai whare Māori, me titiro ki ētahi wāhanga whakaarotau matua.

E ono ngā waehanga matua o te katoa o te raru whai whare Māori.

Ko ērā waehanga ko:

1. Taukaea Māori & Karauna
2. Urupare Māori ā-Rohe
3. Putunga Whai Whare Māori
4. Tautoko Whai Whare Māori
5. Pūnaha Whai Whare Māori
6. Toitūtanga Whai Whare Māori

Taukaea Māori & Karauna

Kāore ngā rautaki o mua atu i waihangatia tahitia me te Māori, ka mutu, kāore hoki ngā inenga haepapa, ngā hua hei ine rānei, nō reira kāore he āhuatanga mahitahi i waenganui i te Karauna me te Māori i roto.

He hirahira te taukaea Māori & Karauna kaha e angitū ai ngā urupare whai whare Māori. Kia tūturu te taukaea me kotahi ngā hātepe whakataunga, me mārāma ngā taha e rua, me tohatoha kōrero, ā, me mahitahi i runga i te whakaaro pono i te wā o te whai urupare.

Urupare Māori ā-Rohe

Kāore ngā aronga whānui o mua atu i whakaea i ngā raru whai whare Māori. Kia tauri te aronga ki ngā urupare Māori ā-rohe, hei reira āhei ai te Māori me te Karauna ki te tohu i ngā hiahia ā-rohe me te whakarite urupare whai whare e whakamahi ana i te aronga 'mā Māori, mō Māori'.

Putunga Whai Whare Māori

He iti te putunga o ngā whare kounga, pai te utu hoki hei rēti, hei hoko hoki mā ngā whānau Māori. He wāhanga nui te whakatū whare maha o te urupare ki te mōreareatanga whai whare kei mua i a tātau, engari me whakarite hoki tātau i ētahi whare tika mō ngā whānau. Me whānui ngā momo whare i te putunga whare – mai i ngā momo whare mō ngā whānau kua rite ki te hoko, ki te hunga e hiahia ana ki te hoki ki ō rātau whenua ake ki te noho me ō rātau whānau i ngā papakāinga.

Tautoko Whai Whare Māori

Me uaua ka whai wāhi atu te Māori ki ngā ara tautoko whai whare pai. Mōhio nei tātau he mea nui te whare mahana, maroke hoki mō te hauora o te whānau, ā, he mea nui te hanga o te whare mō te whānau o roto, engari he whīwhiwhi, he uaua te pūnaha o te wā mā ngā whānau maha.

Pūnaha Whai Whare Māori

Kua kongakongatia te katoa o te pūnaha, ā, me uaua ka wātea. He ārai nui tēnei mō te whakatinana i ngā urupare Māori. I ngā umanga maha i roto i te rāngai whai whare, i ngā ārai hātepe me ngā ārai kaupapa here rānei ka aukati i tā te Māori whakamahi i āna rawa hei whakarite urupare whai whare pai ake.

Toitūtanga Whai Whare Māori

Me toitū ngā urupare whai whare mō ngā whānau. Nō reira me titiro mātau ki ētahi ara e mōhio ai mātau ko ngā uru whai whare ka whakaritea, he pūmau.

He raru wā roa te whakarite urupare whai whare toitū mō te Māori. Ka titiro te whanaketanga o te mahere whakatinana ki ngā kōwhiringa tahua toitū hei whakaea i tēnei raru.

Hāngai ana te toitūtanga ki te whakapūmau i ngā hononga toitū i waenganui i te Māori me ōna whenua. Ko te whakarite tautoko pai mō ngā whānau e hiahia ana ki te noho ki runga papakāinga, ki ō rātau whenua rānei.

He aha i mātua aro ai mātau ki ēnei wāhanga whakaarotau: te pānga ki te hauora o te whānau

Ki te iti noa iho ngā putunga whare, he pūnaha kongakonga, kāore hoki ngā āhutanga whai whare i te toitū – ko ngā whānau ka pāngia kinotia.

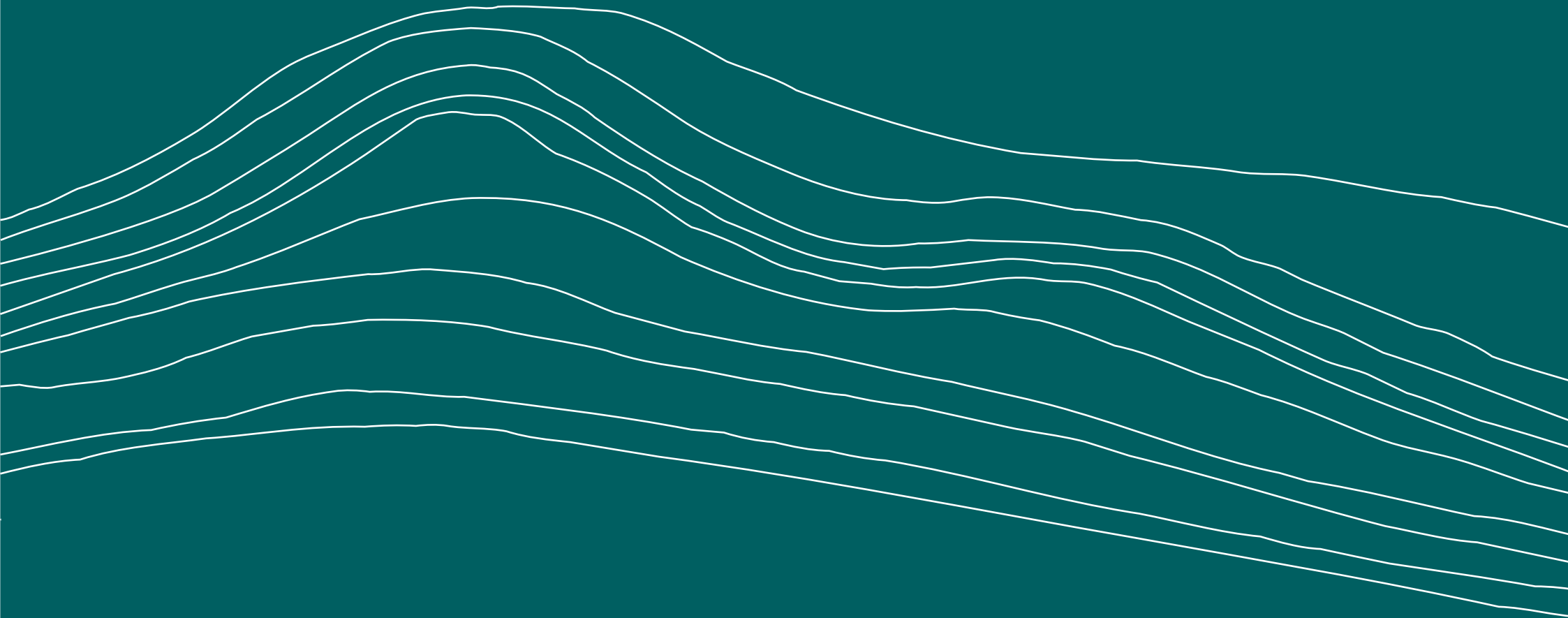
E kitea ana i ēnei ra:

- Ka noho ngā whānau whakarae i roto i ngā kāinga koretake (tēneti, kāuta, karāti)
- E noho kōpā ana ētahi whānau
- E noho mōtēra ana ētahi whānau me te kore i whai ara whakarite kāinga
- Ka 'mau' ngā whānau i te kupenga whirinaki ki ngā āhutanga whai whare tūmatanui
- E māharahara ana ētahi, ā, he kino te hauora hinengaro
- He kino te hauora tinana
- Ka raru ngā tamariki, ā, ka uaua te kura
- He uaua te noho pūmau ki tētahi mahi
- Me uaua ka whakapono ki ngā tari kāwanatanga
- Kua motu te here ki ngā whānau me te whenua

Ka karawhiu tēnei rautaki i ngā wāhanga whakaarotau katoa hei urupare i ngā wero pae tata, pae tawhiti hoki, e hāngai ana ki ngā āhutanga whai whare Māori kia kore ai ngā pānga ki ngā whānau, i ēnei rangi, e kitea āpōpō.



**Te uru atu
ki te MAIHI
Ka Ora**





Te uru atu ki te MAIHI Ka Ora

Ko ngā mema o te rōpū Māori ko ngā iwi, ngā hapū, te Kāhui Heamana ā-Iwi o te Motu, Te Matapihi, ngā marae, ngā rōpū whenua Māori me ngā kaiwhakarato.

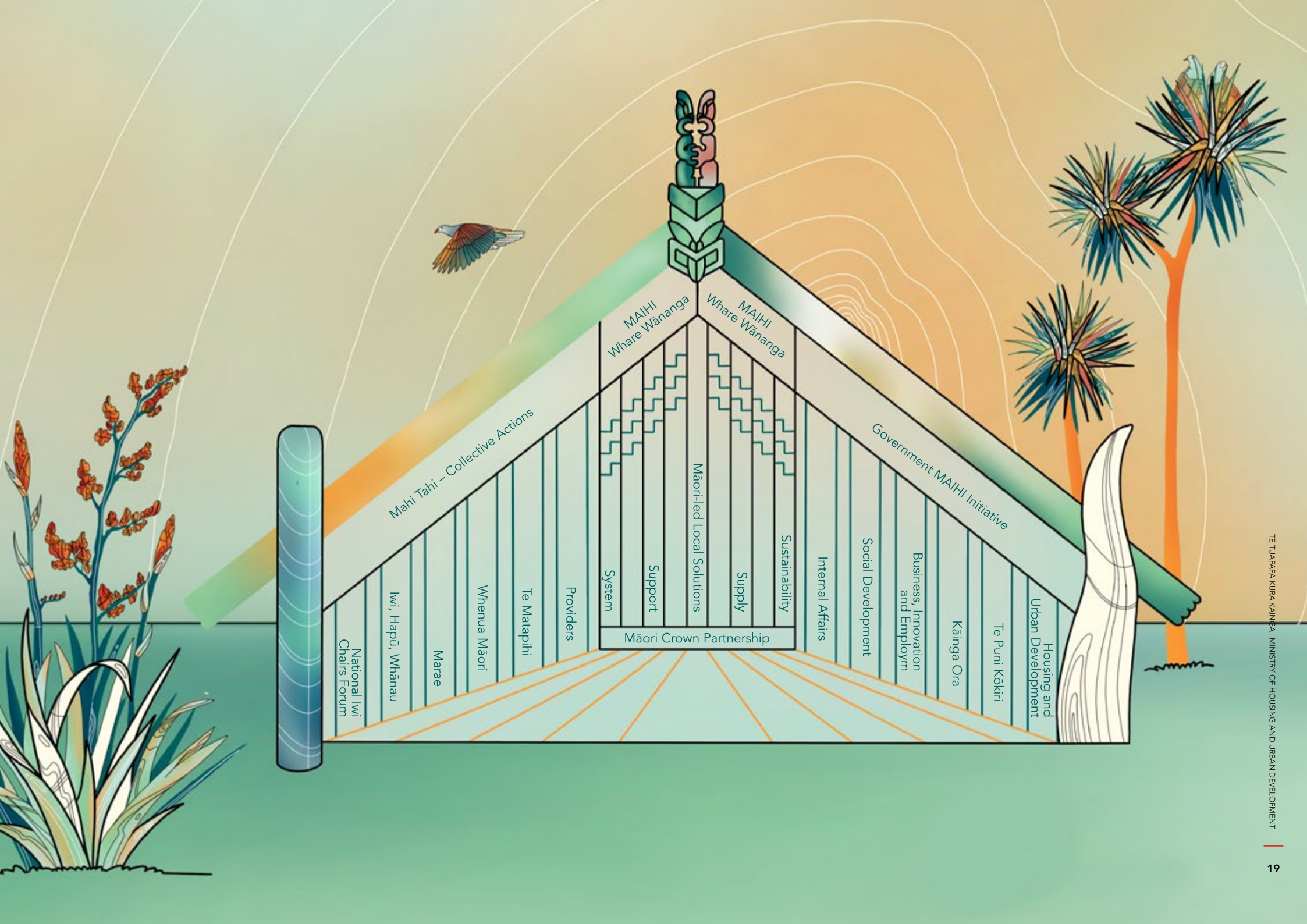
Ko ngā mema o te rōpū Karauna ko ngā tari kāwanatanga rerekē me ngā umanga whai hononga mā roto mai i a MAIHI, me te aha, me kotahi te hoe.

Ko te tukutanga o te rautaki, pēnei i te tū o te whare, e noho ana i ngā pakihwi o ngā taha e rua, kia taurite ngā haepapatanga, me whai tūāpapa, ā, me upoko pakaru ki te whakarite i tētahi āpōpō whai whare pai ake mō te katoa o Aotearoa me ngā Māori.

Pēnei i ngā pakitara o tētahi whare – me hangarite ngā taha e rua. Me mahi i runga i te whakaaro tahi, mā te kōrero pono me te whai wāhitanga tika. Kia ara ake he wero, me whakaea mā te mahitahi – nā te mea ki te kore ngā pakitara o te whare e pakari, ka hinga te whare, ki te kore te taukaea Māori & Karauna e pakari, ka kore ngā taha e rua e mahitahi kia hua mai ai ko tētahi āpōpō whai whare pai ake mō ngā whānau Māori.

Nā te taukaea kaha ko ngā hua whai whare pai ake mō ngā whānau

Mōhiotia ana ko ngā hua ka puta mō te Māori i ngā taukaea Māori & Karauna pai, hangarite anō hoki. Kei te puta kē ngā hua pai nā te whakatīnatananga o MAIHI.



MAIHI
Whare Wananga

MAIHI
Whare Wananga

Mahi Tahī – Collective Actions

Government MAIHI Initiative

Māori Crown Partnership

National Iwi
Chairs Forum

Iwi, Hapū, Whānau

Marae

Whenua Māori

Te Matapahi

Providers

System

Support

Māori-led Local Solutions

Supply

Sustainability

Internal Affairs

Social Development

Business, Innovation
and Employem

Kāinga Ora

Te Puni Kōkiri

Housing and
Urban Development



Photo credit: Te Puni Kōkiri

Tā mātau mahere: urupare, arotake, whakatika

Ko te tuanui te wāhanga whakamutunga o te whare. Ka hanga i te tihi o te whare, te kaihono i te Māori me te Karauna. Ka tō i te kaha o ngā taha e rua o te whare, ā, ka whakaahua i te hangaritetanga kua hua ake i te taukaea.

Ka whakaahua ngā heke i ā tātau mahi kotahi hei aro ki ngā whakaarotau (i te tuarongo o te whare). Ka whakatata atu tātau, mā ia taumata, ki te pou tāhū o te whare me te whakatinana i te whakakitenga kotahi – *kia whai kāinga haumarū, hauora, utu-pai hoki ngā whānau, ā, kia pūmau te noho puta noa i te horopaki whai whare Māori.*

I tīmata tā tātau mahitahi i te marae ātea mā te waihangatanga me te whakatinanatanga o MAIHI.

I hanga tātau i te tuarongo o te whare, he mea whakauru i ngā whakaarotau me te whakapūmau i te noho a te whānau hei tūāpapa.

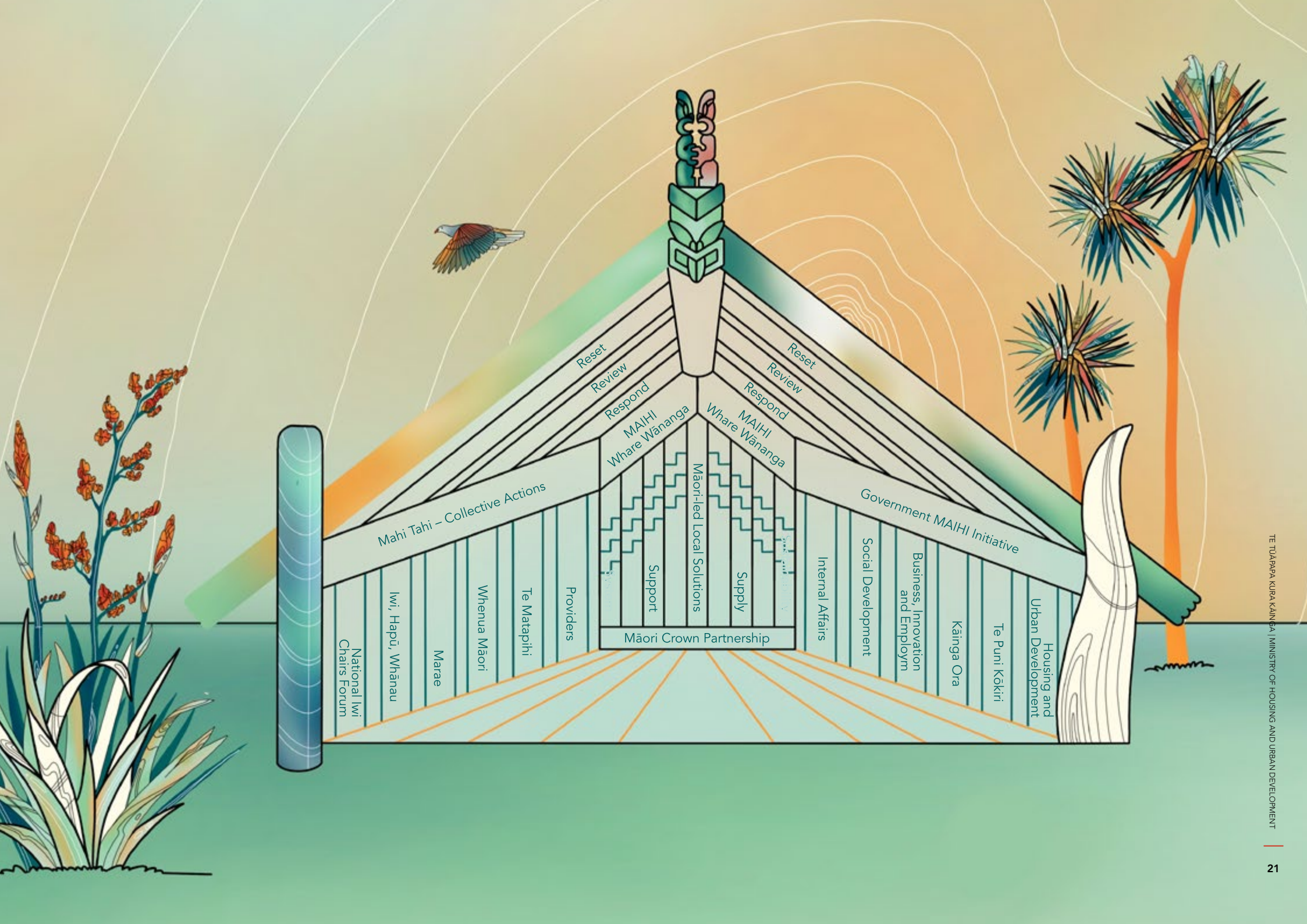
Ka whakatū tātau i ngā pakitara o te whare – Ko te Māori me te Karauna kei ia taha,

ētahi kāhui e mahitahi ana kia pakari te whare.

Kua whītikina te tuanui, ki waenganui i ngā pakitara e rua. Ka whakaatu ngā heke katoa i ngā taumata hei kake mā tātau, kia koke whakamua ai tātau.

He māhere tā tātau ināianeī mō ngā mahi, ā-taukaea nei, kia puāwai mai ko te whakakitenga kotahi mō te āpōpō o ngā āhuatanga whai whare Māori.

Ka pūmau te mahere ki te hanga o te anga mahi MAIHI, ā, ka whakaraupapa hoki i te aronga whakatutuki i te 'urupare, arotake, me te whakatika' i te āhua ki te pūnaha whai whare Māori me te whakahāngai ki ngā whakaarotau kotahi e waihangatia tahitia ana me ngā iwi, te Māori anō hoki.



National Iwi Chairs Forum

Mahi Tahī – Collective Actions

Iwi, Hapū, Whānau

Marae

Whenua Māori

Te Matapahi

Providers

Māori Crown Partnership

Support

Māori-led Local Solutions

Supply

Internal Affairs

Social Development

Business, Innovation and Employment

Kāinga Ora

Te Puni Kōkiri

Housing and Urban Development

Government MAIHI Initiative

MAIHI Whare Wānanga

MAIHI Whare Wānanga

Reset

Review

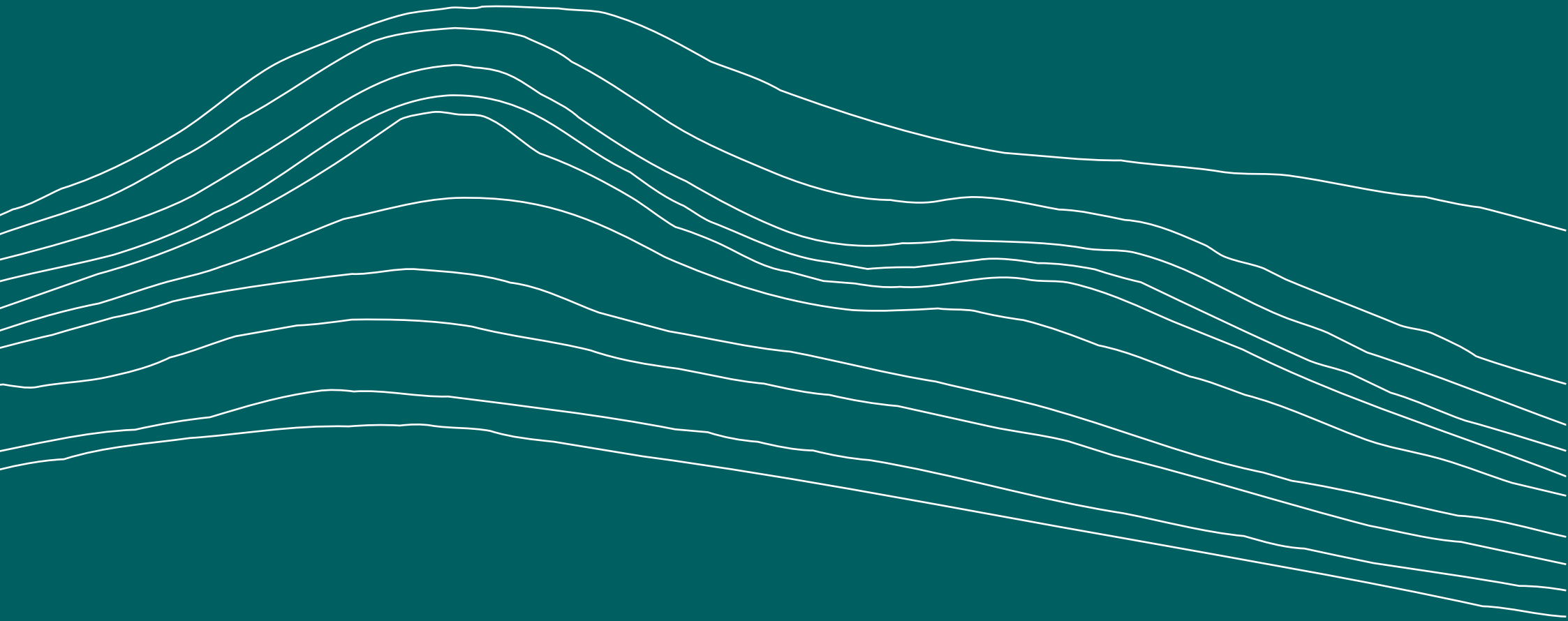
Respond

Reset

Review

Respond

Tā mātau mahere



Whakaarotau 1: Taukaea Māori & Karauna

Whāinga matua: Kia mahitahi i runga i te whakaaro kotahi, kia tutuki i te Karauna me te Māori te hangaritetanga mā tētahi hōtaka mahi ngātahi ka whakapakari i ngā urupare whai whare mō ngā whānau.

	Tūmahi	Ara	Tukutanga	Angawā	Tūnga
URUPARE	Whakatinana i te anga mahi MAIHI He kaupapa whai i te ara pūnaha maha a MAIHI. Ka whakatō ia i te haepapatanga o te mahitahi puta noa i ngā umanga kāwanatanga hei whakaterere i ngā hua whai whare Māori, hauora Māori anō hoki.	Hātepe Kāhui Minita	Ka whakatūngia he aronga pūnaha whānui hei whakaterere i ngā hua whai whare Māori, hauora Māori hoki	2019–2021	MOROKI
	MAIHI Whare Wānanga Ka whakakotahi mai a Te MAIHI Whare Wānanga i ngā māngai o te rāngai whai whare Māori me ngā āpiha o te Karauna ki te mātai i te tukutanga o te Anga Mahi MAIHI, ka whāngai hoki i tana whanaketanga i tā mātau arotake, ako hoki mā roto mai i ngā ara mahi Arotake, Whakatika anō hoki.	Anga mahi MAIHI	Ka whakaritea te taukaea hei mātai i te whakatinanatanga o te anga mahi MAIHI	2020–2021	KUA EA
	Te waihanga tahi i te rautaki whai whare Māori me te Māori Ko te pūtaka o te rautaki whai whare Māori ko te whakarewa i te Anga Mahi MAIHI me te whakatau i te aronga rautaki o ngā āhutanga whai whare Māori mō ngā tau 30 e heke mai nei.	MAIHI Whare Wānanga	Ka hangaia tahitia te Rautaki Whai Whare Māori me te Māori	2021–moroki	MOROKI
AROTAKE	Arotake i te tūnga o te taukaea Māori & Karauna Arotake i ngā hātepe me ngā kaupapa here kia mōhio ai he pūmau te taukaea Māori & Karauna, ā, ka whai wāhi hoki te Māori i roto i ngā whakatau mana nui.	MAIHI Whare Wānanga	He arotakenga o te tūnga o te wā o tā te Māori whai wāhi atu ki ngā whakataunga mana nui	Q4 2021–2023	KA TĪMATA Ā TE Q4 2021
	Arotake i ngā hātepe i waenganui i ngā tari kāwanatanga me ngā pānga ki te taukaea Kia hāngai ngā kaupapa here kāwanatanga whānui me ngā taukaea ki te rautaki whai whare Māori me ōna uaratanga.	MAIHI Whare Wānanga	He arotakenga o te tūnga o te wā o tā te Māori whai wāhi atu ki ngā whakataunga mana nui i te whānuitanga o te kāwanatanga	Q4 2021–2023	KA TĪMATA Ā TE Q4 2021
WHAKATIKA	Whakatika i te hātepe puta noa i te kāwanatanga Whakatika i ngā hātepe me ngā kaupapa here kia whai wāhi atu te Māori ki ngā hātepe whakataunga kāwanatanga whānui e whai pānga ana ki ngā hua whai whare Māori. Ka whai wāhi atu ko ngā Nōhanga Ohotata, ngā Nōhanga Whakawhiti me ngā kaupapa here o Aro Mai.	MAIHI Whare Wānanga	Whakatinanatanga o tētahi hātepe hou hei whakaū i tā te Māori whai wāhi atu ki ngā whakataunga puta noa i ngā wāhanga whakaarotau whai whare	2019–2021	KA TĪMATA Ā TE Q4 2021

Whakaarotau 2: Urupare Māori Ā-Rohe

Whāinga matua: Kia nui ake ngā urupare Māori ā-rohe kounga e whakatutuki ana i ngā hiahia o ngā whānau.

	Tūmahi	Ara	Tukutanga	Angawā	Tūnga
URUPARE	Te Pūtea Auahatanga ā-Rohe & Taukaea He pūtea \$16.6 miriona te Pūtea Auahatanga ā-Rohe & Taukaea i whakaritea i te maru o te Mahere Mahi Kāinga Koretanga. Wātea ana te pūtea ki ngā taukaea e rua neke atu o ngā kaiwhakarato ā-rohe, ngā iwi, ngā hoa hapori whānui rānei, hei aro ki ngā āhukatanga kāinga kore i ō rātau rohe.	Mahere Mahi Kāinga Koretanga	Tautoko i ngā urupare ā-rohe ki te kāinga koretanga	2020–moroki	MOROKI
	Rautaki ā-wāhi Kei te āta whai mātau i te rautaki ā-wāhi hei pakanga i ngā wero whai whare o Aotearoa me ngā wero whakawhanake kāinga, whare tāone anō hoki. Ka whakamahi tēnei rautaki i ngā mōhiotanga ā-rohe hei ārahi i ngā āhukatanga mahi me ngā hapori.	Hōtaka mahi ā-wāhi	Ka whai rautaki ā-wāhi ngā urupare whai whare, ā, ka whakatinanatia tahitia me ngā hapori	2021–moroki	MOROKI
AROTAKE	Kia whai urupare Māori ā-rohe i ngā hōtaka me ngā taunakitanga whai whare Arotake i ngā āhukatanga o ngā hōtaka whai whare katoa kia whakamātāmua rātau i ngā urupare whai whare Māori ā-rohe i ngā pokapū ā-rohe iti.	MAIHI Whare Wānanga	Ka arahina ngā hōtaka whai whare katoa mō te Māori e te Māori, me te aha, ka kaha aro ki ngā pokapū ā-rohe iti	Q4 2021–2023	KA TĪMATA Ā TE Q4 2021
	Te mahitahi ki ngā Māori i ngā pokapū ā-rohe iti Arotake i ētahi atu ara pai ake hei whai mā te Kāwanatanga i tō te Māori taha i te taumata ā-rohe hei whakatutuki i ngā hiahia whai whare o ngā Māori.	MAIHI Whare Wānanga	Ka whakamanahia ngā taukaea ā-rohe i roto i ngā pokapū ā-rohe iti	Q4 2021–2023	KA TĪMATA Ā TE Q4 2021
WHAKATIKA	Hātepe me ngā kaupapa here whakatika Panoni i ngā āhukatanga kaupapa here kia pai ake ai te tuku i ngā urupare whai whare Māori ā-rohe i ngā pokapū ā-rohe iti.	MAIHI Whare Wānanga	Ka whakaritea ngā āhukatanga kaupapa here me ngā hātepe hei whakamana, hei tautoko hoki i ngā urupare ā-rohe nā te Māori tonu i ārahi, i roto i ngā pokapū ā-rohe iti	2023–2024	KA TĪMATA Ā TE Q2 2023

Whakaarotau 3: Putunga Whai Whare Māori

Whāinga matua: Ka whakaea te nui o ngā kāinga kua hokona e ngā Māori, me ngā whare kua hokona e ngā iwi me ngā hapū, i ngā hiahia whai whare o ngā Māori katoa.

	Tūmahi	Ara	Tukutanga	Angawā	Tūnga
URUPARE	<p>He taunakitanga tere hei hanga i ētahi anō whare Māori I tīmata te whakatinanatanga o te mahere mō te Tahua Pūtea 2021 mō te hanganga me te putunga – mahere Whai Kāinga, Whai Oranga.</p> <p>He Kūkū ki te Kāinga Kia tuku tonu ki ngā kaupapa putunga whai whare e tipu ake ana.</p> <p>He Taupae He whanake i te āheitanga hangarau o ngā rōpū whakahaere Māori ka tuku ki ngā putunga whai whare e tipu ake ana.</p> <p>Tahua whakamahere Papakāinga (TPK) Whakarite i tētahi karāti hei tautoko i te kauneketanga o ngā rōpū i roto i ngā mahi whakamahere papakāinga kia tae atu ai rātau ki te wāhi tīmata hanga whare, arā, kia “rite te hāpara” (kei te āhua o te tahua).</p> <p>Hanganga mō ngā kāinga hou i runga Whenua Māori (TPK) He tahua hanganga kua whakaritea hei tautoko i ngā whānau me te whanaketanga o ngā papakāinga i runga whenua Māori mō:</p> <p>Ngā whānau, he tahua hei whakarite i te whenua mō te whare tūmataiti mā te āwhina ki te whakatū hanganga i waenganui i te rohenga o te whenua ka tū te whare me te tūhononga hanganga.</p> <p>Utu waihanga kāinga (TPK) Tautoko ā-pūtea i te waihangatanga o ētahi whare rēti hou, utu-pai hoki, i runga i ētahi papakāinga iti, ka noho i raro tonu i te mana kāhui o ngā rōpū Māori. Ka whai wāhi atu ēnei karāti ki ngā whare.</p>	<p>Whai Kāinga, Whai Oranga</p> <p>He Kūkū ki te Kāinga</p> <p>He Taupae</p> <p>Tahua whakamahere Papakāinga (TPK)</p> <p>Hanganga mō ngā kāinga hou i runga Whenua Māori (TPK)</p> <p>Utu waihanga kāinga (TPK)</p>	<p>Tukutanga paetata: 109 ngā whare hou i te tau pūtea 21/22, ā, 196 i te tau pūtea 22/23 kia 305 ngā whare hou katoa i ngā marama 24</p> <p>Tukutanga whānui: 1000 ngā whare hou atu anō i mua i te tau 2024</p> <p>Kia tutuki te hangatanga o ngā whare hou 2,700</p>	2020–2024	MOROKI

	Tūmahī	Ara	Tukutanga	Angawā	Tūnga
URUPARE	<p>Ngā whakatikatika ki ngā kāinga kua hokona e ngā whānau (TPK) Ka tuku tahua karāti a Te Puni Kōkiri hei: Whakapai ake i te kounga o ngā āhuratanga whai whare Māori i Aotearoa, kia heke te tokomaha o ngā whānau Māori e noho ana i ngā āhuratanga whare hīrokiroki, whare marahea hoki, me te whakatipu i te āheitanga o ngā whānau Māori ki te whakatika.</p>	Ngā whakatikatika ki ngā kāinga kua hokona e ngā whānau	Ngā whakatikatika ki ngā whare 700 kua hokona e te Māori	2021–2024	MOROKI
AROTAKE	<p>Arotake i ngā ringa tahua katoa e wātea ana ki te Māori Kia āhei te Māori ki ngā ringa tahua katoa puta noa i te punaha hei whakapiki i ngā putunga whai whare, pēnei i te Tahua Whakahoro Whai Whare, te Whenua mō te Whai Whare me te Whai Kāinga Whakaahu Whakamua.</p>	MAIHI Whare Wānanga	He mea ārahi ngā hōtaka whai whare katoa mō ngā whanaketanga Māori e te Māori	Q1 2022–2023	KA TĪMATA Ā TE Q1 2022
	<p>Ka tirohia ngā āraitanga whanake papakāinga Ka arotake i ngā āhuratanga mō te whakatūnga o ngā papakāinga hei titiro ki ngā āraitanga.</p>	MAIHI Whare Wānanga	Kua whakamanahia ngā taukaea ā-rohe	Q1 2022–2023	KA TĪMATA Ā TE Q1 2022
	<p>Arotakenga kaunekeru Arotake i te kauneketanga o Whai Kāinga, Whai Oranga.</p>	Whai Kāinga, Whai Oranga MAIHI Whare Wānanga	Kia tutuki i a Whai Kāinga, Whai Oranga ana whāinga	Q4 2023–Q4 2024	KA TĪMATA Ā TE Q4 2023

Whakaarotau 4: Tautoko Whai Whare Māori

Whāinga matua: Kia pai ake te whai wāhitanga o ngā whānau ki ngā āhuetanga tautoko e hāngai ana, ka mutu, ka āwhina i tā rātau kuhu ki roto i ngā whare e hiahiatia ana, me te noho ki reira.

	Tūmahi	Ara	Tukutanga	Angawā	Tūnga
URUPARE	<p>Mahere Mahi Kāinga Koretanga o Aotearoa: Kaupapa Raraunga me ngā Taunakitanga</p> <p>I hangaia motuhaketia te Kaupapa Raraunga me ngā Taunakitanga hei mātai, hei arotake hoki i te Anga Mahi Kāinga Koretanga o Aotearoa. He whāinga matarua:</p> <ol style="list-style-type: none"> 1. He hanga i tētahi pūnaha raraunga me ngā taunakitanga nui, hāngai hoki mō te hunga kāinga kore ka whai whakaaro ki ngā take nui me ngā ākitanga i hua ake ai te kāinga koretanga me ngā āhuetanga o te hunga e wheako ana, kua wheako, ka tūpono wheako rānei i te kāinga koretanga; me 2. Te whakawhānui i te mōhiotanga ki ngā urupare pai, te hunga whai wāhi me ngā āhuetanga i hua ake ai mā roto mai i tētahi hanumitanga aroturuki, arotake, aromātai hoki puta noa i ngā kaupapa HAP. <p>Koinei tētahi o ngā kaupapa 18 i roto i te HAP; ka aro, ka tautoko hoki i Te Whare o te Maihi (MAIHI) me ētahi atu kaupapa here whai whare me ngā raraunga tiketike.</p>	Mahere Mahi Kāinga Koretanga o Aotearoa	Ka mahitahi me te Māori ki te tautoko i ngā whānau e kaha rongo ana i te kāinga koretanga	2020–moroki	MOROKI
	<p>Ngā Rawa o Aro Mai</p> <p>Tōna tikanga ka āwhina ngā rawa Kāinga Tuatahi i ngā kaihoko kāinga tuatahi me ngā whiwhinga moni paku, heoi he iti te moni kuhu, ki te hoko kāinga me ōna hua mā te inihua i tā te kaihoko mōkete mō te kainama. He wāhanga tēnei o te whakatika i te Hōtaka Waihanga Kāwanatanga. Kua piki ngā taumata whiwhinga moni me ngā taumata utu whare i ētahi wāhi, nō te 1 o Paengawhāwhā.</p>	Rawa Kāinga Tuatahi	He āwhinatanga e wātea ana ki ngā kaihoko kāinga tuatahi	2021–moroki	MOROKI
URUPARE	<p>Pūtea Whai Kāinga Whakaahu Whakamua (PHO)</p> <p>He kaupapa te tahua PHO e aro ana ki te whakapiki i ngā kōwhiringa mō ngā tāngata ki te hoko kāinga. Ka whakamahi i ngā pūkenga nō te rāngai PHO o te wā me te tautoko i ngā hiahia hoko kāinga o ngā iwi me te Māori mā roto mai i ngā rōpū iwi, Māori anō hoki, me te whakarite hoki i tētahi rawa ki ngā whare e tika ana. Nā te PHO i āhei ai ngā whānau ki te mahitahi me ngā kaiwhakarato ki te hoko kāinga. Ko ētahi o ngā momo rawa PHO e wātea ana i Aotearoa, e wātea ana mā roto mai i te tahua PHO, ko te hoko ngātahi i ngā kāinga, te rētihia-kia-hokona me te rīhi.</p>	Pūtea Whai Kāinga Whakaahu Whakamua	He nui ake ngā kōwhiringa mō ngā tāngata ki te hoko kāinga	2021–moroki	MOROKI

	Tūmahi	Ara	Tukutanga	Angawā	Tūnga
AROTAKE	Arotake i ngā ratonga tautoko e wātea ana ki te Māori Mahitahi ki te Māori hei arotake i ngā rauemi ka whakarite āwhina ā-pūtea, ā-mātau ahumoni hoki, tautoko noho whare, mātauranga me te whakatairangatanga ki te hanga i runga i ētahi hōtaka o te wā pēnei i a Sorted Kāinga Ora me Rite ki te Rēti.	MAIHI Whare Wānanga	He mātāi i ngā ratonga e wātea ana ki te Māori, ka mutu, ka whakatutuki i te arotakenga o te whai huatanga me te hāngaitanga	Q1 2022–2023	KA TĪMATA Ā TE Q1 2022
	Arotake i te aronga hauora ki ngā āhuatanga whai whare. Kia torowhānui te aronga ki ngā urupare whai whare Māori, ā, ka inehia te angitū, kua mā ngā rāhuitanga o te momo whare e wātea ana, engari mā te whanaketanga o te hauora o te whānau.	MAIHI Whare Wānanga	Kia whai wāhi atu te hauora o te whānau ki ngā ine angitū, kua noa iho ko te whakatūnga o tētahi whare	Q2 2023–2024	KA TĪMATA Ā TE Q2 2023
	Arotake i ngā kōwhiringa whai whare Māori e wātea ana ki ngā whānau Arotake i ngā āraitanga o tā te Māori whai wāhi atu ki tō rātau kōwhiringa whai whare matua.	MAIHI Whare Wānanga	Ka arotake i ngā kōwhiringa whai whare e wātea ana ki te Māori me ētahi tūtohi e hāngai ana ki te whanake i ngā kōwhiringa whai whare Māori pai ake i te pūnaha	Q4 2023–Q4 2024	KA TĪMATA Ā TE Q4 2023
AROTAKE	Arotake i ngā ratonga tautoko whai whare Māori Arotake i te whai wāhitanga ki ngā ratonga tautoko e arahina ana e te Māori.	MAIHI Whare Wānanga	Ka arotake i te nui o ngā ratonga tautoko e arahina ana e te Māori, e wātea ana i te wā nei, me tētahi mahere kua whanakehia hei whakapiki i te nui o ngā ratonga e arahina ana e te Māori, e wātea ana ki ngā whānau	Q1 2022–Q4 2023	KA TĪMATA Ā TE Q1 2022
WHAKATIKA	Waihanga i tētahi kohinga rauemi hou mō ngā whānau He kohinga rauemi ka whakarite āwhina ā-pūtea, ā-mātau ahumoni hoki, tautoko noho whare, mātauranga me te whakatairangatanga, e wātea ana.	MAIHI Whare Wānanga	He kohinga rauemi e wātea ana ki ngā whānau hei āwhina i te taha mātau ahumoni, tautoko noho whare me ngā kupu āwhina moni	Q2 2022–Q4 2023	KA TĪMATA Ā TE Q2 2022

Whakaarotau 5: Pūnaha Whai Whare Māori

Whāinga matua: Ka tautoko te pūnaha i te Māori ki te whakaterere i ngā urupare whai whare i arahina e te Māori.

	Tūmahi	Ara	Tukutanga	Angawā	Tūnga
URUPARE	<p>Waihanga i tētahi aronga 'ara kotahi' Waihanga i tētahi aronga 'ara kotahi' me te arotake i ngā panonitanga me whai hei whakatika i te āhuatanga kongakonga o te pūnaha o te wā.</p>	MAIHI Whare Wānanga	Ngāwari noa iho tā te Māori whai wāhi atu ki te pūnaha whai whare	2020–moroki	MOROKI
	<p>Rōpū Rangahau me te Māramatanga Ka tohu te Rōpū Rangahau me te Māramatanga nō roto mai i Te Tūāpapa Kura Kāinga, ka whakaemi hoki i ngā raraunga me ngā rangahau i ngā momo mātāpuna maha hei tautoko i te whanaketanga, te whakatinanatanga me te arotakenga o ā HUD kaupapa here, ka mutu, ka whakarite rīpoata mō ngā Minita whai whare, me te hunga tūmatanui mā roto mai i te Papatohu Whai Whare me ētahi atu rīpoata. Ko tētahi o ngā aronga matua o te hōtaka mahi Rangahau me te Māramatanga, ko te whakapai i te whai wāhitanga me te whakamahinga o ngā raraunga nā HUD, ā, hei ngā rangi e heke mai nei pea, mā ētahi atu rōpū whakahaere me te hunga tūmatanui.</p>	Rōpū Rangahau me te Māramatanga	He pai ake te wāteatanga o ngā raraunga hei whāngai i ngā whakataunga whai whare Māori o āpōpō	2021–moroki	MOROKI
AROTAKE	<p>Kia hāngai ngā ture. Arotake i te Ture Whai Whare Māori 1935 hei wāhanga o te arotake ture whānui.</p>	MAIHI Whare Wānanga	Ka wātea tētahi arotakenga o ngā ture me ngā tūtohi ki ngā panonitanga, mēnā e hiahiatia ana	Q4 2021–2023	KA TĪMATA Ā TE Q4 2021
	<p>Arotakenga o ngā ringa pūnaha whai whare o te wā. Kia noho te whānau hei tūāpapa mō ngā whanaketanga kaupapa here me ngā tautoko ā-tahua kia māmā te whai wāhitanga atu o te pūnaha e te hunga me mātua whai wāhi.</p>	MAIHI Whare Wānanga	He arotakenga ka whakaū i te whakaaro e tika ana tā ngā kaupapa here whakatutuki i ngā tukutanga mō ngā whānau	Q2 2022–2023	KA TĪMATA Ā TE Q2 2022

	Tūmahi	Ara	Tukutanga	Angawā	Tūnga
WHAKATIKA	<p>Anga mahi Raraunga Mahi nā te Māori i ārahi</p> <p>He anga mahi Raraunga Whai Whare Māori hei titiro ki ngā kōrero e kohia ana i te wā nei, me ngā kōrero me kōhi haere ake nei hei whāngai i ngā whakataunga haumi whai whare Māori. Ka whāngai tēnei i ngā rīpoata mahi me te whakaatu māramatanga ka tohu i ngā whakataunga haumi mō ngā rā e heke mai nei.</p>	Te Matapihi	<p>He anga mahi raraunga Māori e hāngai ana.</p> <p>Ka hāngai te anga mahi hou ki ngā māramatanga, rautaki me ngā rangahau i <i>Ka Pa Ka Rito</i></p>	Q1 2023–2024	KA TĪMATA Ā TE Q1 2023
	<p>Te Tauākī Kaupapa Here a te Kāwanatanga mō te Whakawhanake Whare, Tāone anō hoki</p> <p>Ko te pūtake o te GPS-HUD ko te tohu i te aronga whānui me ngā whakaarotau o te Kāwanatanga mō ngā whakawhanaketanga kāinga, whare tāone anō hoki. Ka whakarite i tētahi pae tawhiti kotahi mō te hunga i roto i te pūnaha pēnei i ngā Kaiwhakarato Whai Whare Hapori (CHP), ngā rōpū motuhake i te kāwanatanga (NGO), ngā iwi, te Māori me ētahi atu. Ka whāngai tēnei, ka ārahi hoki i ngā whakataunga me ngā mahi a ngā umanga kōwanatanga whai wāhi atu ki ngā whakawhanaketanga kāinga, whare tāone anō hoki.</p>	Kāwanatanga	Kua rite te aronga kāwanatanga whānui mō ngā whakawhanaketanga kāinga, whare tāone anō hoki	2021	KUA EA
	<p>Whakahoutanga RMA</p> <p>E whakarite ana te Kāwanatanga ki te whakakore i te Ture Whakahaere Rawa 1991 (RMA) me te whakakapi mā ngā ture hou e toru. Kāore anō te RMA kia whakatutuki i ngā hua taiao, whakawhanake hoki, i manakohia, ā, kāore hoki i rite tonu tā ngā whakataunga RMA whakamana i ngā mātāpono o Te Tiriti o Waitangi.</p> <p>He roa rawa ngā hatepe o te wā, he nui rawa te utu, ā, e kore hoki e whakatika i ngā wero hou maha kei mua i te taiao me ngā hapori.</p> <p>Me mātua whai pūnaha tiaki rawa a Aotearoa ka āta whakatau i ēnei wero mō ngā reanga o nāianei me āpōpō.</p>	<p>MAIHI Whare Wānanga</p> <p>Kāwanatanga</p>	<p>He whakahoutanga ture Whakahaeretanga Rawa iti te utu, ka whakamana i ngā mātāpono o Te Tiriti o Waitangi me te aro ki ngā wero hou kei mua tonu i te hapori me te taiao</p>	2021–2022	MOROKI

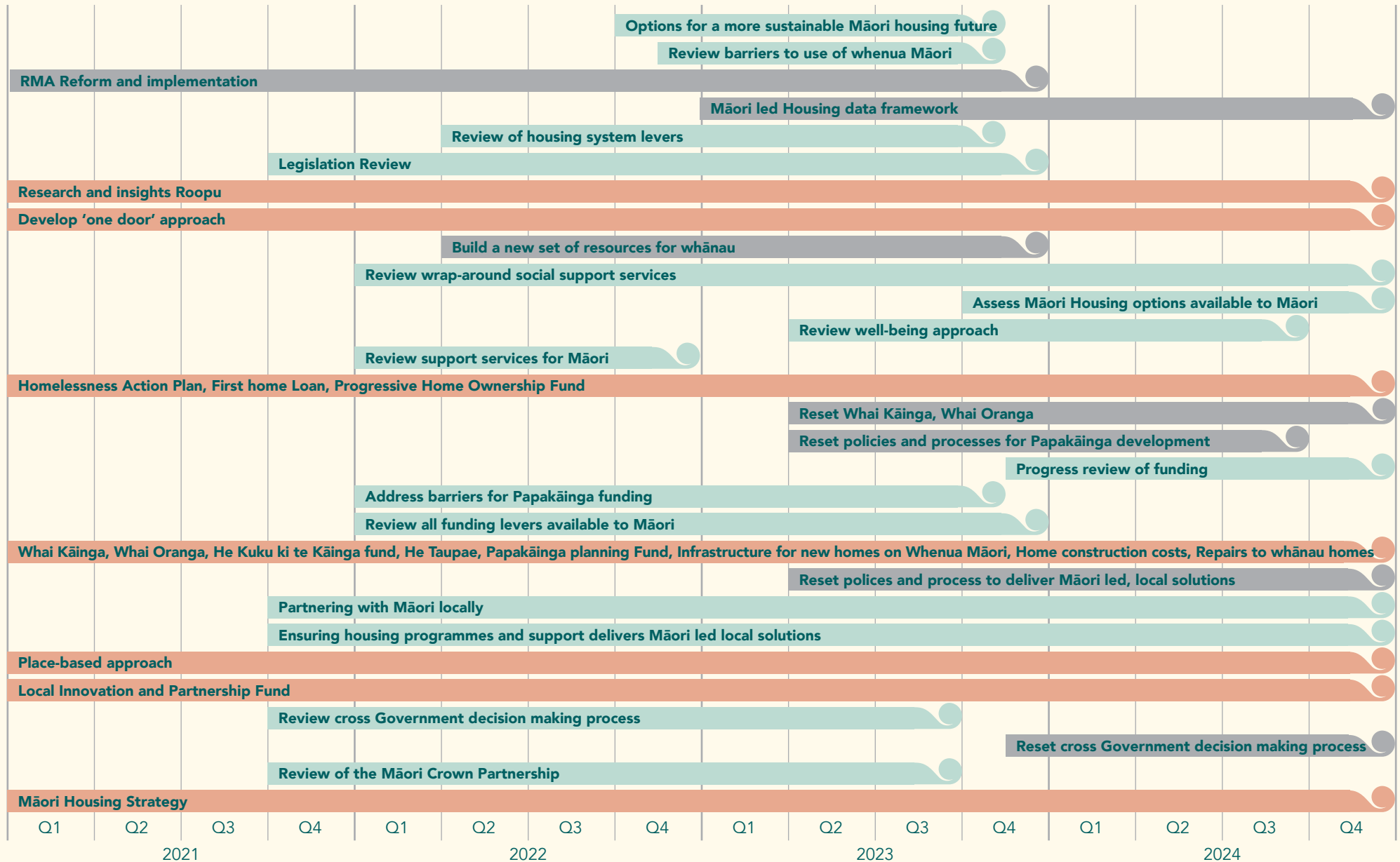
Whakaarotau 6: Toitūtanga Whai Whare Māori

Whāinga matua: Tautokona ana ngā whānau hei whakatutuki urupare whai whare mana nui i runga i ō rātau whenua. E āhei ana te Māori ki te whakaū i te hononga ki ōna whenua mā roto mai i ngā āhuatanga whai whare, ā, he auaha ō rātau āhuatanga whai whare, ka hāngai hoki ki ngā pānga me ngā āhuatanga o te panonitanga ā-āhuarangi.

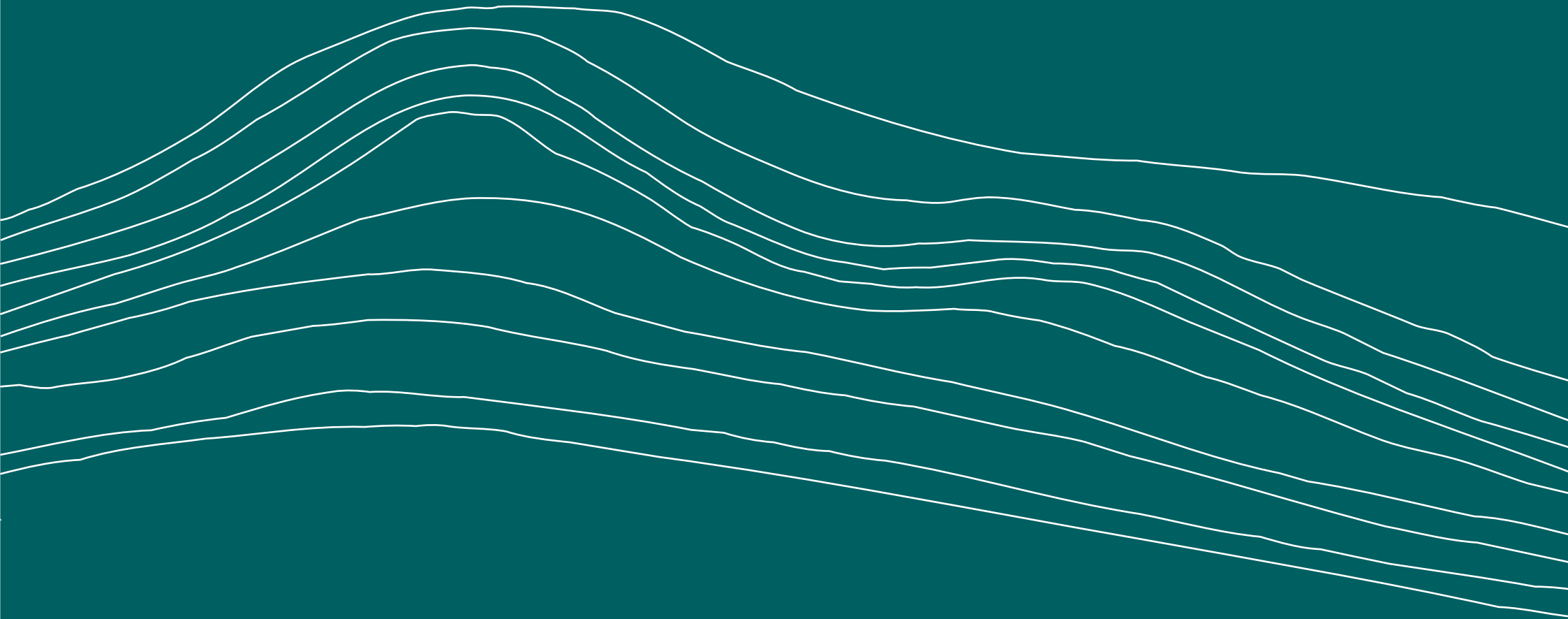
	Tūmahi	Ara	Tukutanga	Angawā	Tūnga
TE URUPARE	<p>Te whakatipu whare Toitū</p> <p>Kia whai hangarau penapena pūngao, kia motuhake te toitūtanga i ngā wāhi e āhei ana, ā, kia iti noa iho hoki te pānga ki te taiao o ngā urupare whai whare Māori. Kia tika te whakahoki o ngā urupare whai whare ki ngā pānga o te wā, o āpōpō hoki, o te panonitanga ā-āhuarangi.</p>	E mahi tahi ana a MAIHI Whare Wānanga ki ngā mātanga	He toitū ngā waihangananga whare hou	2019–2021	MOROKI
TE AROTAKE	<p>Whenua Māori</p> <p>Whakahaere arotakenga o ngā āraitanga whakauaua i tā te Māori whakamahi i ō rātau whenua ake mō ngā whanaketanga whai whare, ka aukati i tā rātau whai hononga ki ō rātau whenua.</p>	MAIHI Whare Wānanga	He arotakenga o ngā āraitanga whakauaua i tā te Māori whakamahi i ō rātau whenua ake me ngā kōrero mō ngā tūtohitanga hei panoni	Q1 2023–Q4 2023	KA TĪMATA Ā TE Q4 2021
	<p>Kōwhiringa mō tētahi anamata whai whare Māori toitū ake</p> <p>Arotake i ētahi momo urupare whai whare ka whakamahi i ngā hangarau toitūtanga-motuhake.</p>	MAIHI Whare Wānanga	Arotake i ētahi o ngā hangarau hou hei whakamahi i roto i ngā whanaketanga whai whare o āpōpō	Q4 2022–Q4 2023	KA TĪMATA Ā TE Q4 2021
TE WHAKATIKA	<p>Urban Development Act 2020 (UD Act)</p> <p>Ka tautoko te Ture UD i te tukutanga o ngā whanaketanga tāone whīwhiwhi ka whakamānu hapori mā te waihanga hātepe whāiti mō te kauneke kaupapa me te whakarite whai wāhitanga ki tētahi kete mana whakawhanake.</p>	Kāwanatanga	Te whakatinanatanga o tētahi hātepe hou hei whakaū i tā te Māori whai wāhi atu ki ngā whakataunga puta noa i ngā wāhanga whakaarotau whai whare	2020	KUA EA

MAIHI Ka Ora – The National Māori Housing Strategy

Respond ● Review ● Reset ●



Whakatinanatanga me te haepapatanga



Whakatinanatanga me te haepapatanga

- Ka whakarite aronga rautaki a Maihi Ka Ora mō ngā āhuatanga whai whare Māori, me te ū ki te mahitahi me te Māori i runga i te whakaaro pai. Whai wāhi atu ana te whakaūnga nei ki te waihangatanga o te mahere whakatinanatanga.
- Ka hangaia tētahi hōtaka whakatinana whīwhihi me tētahi anga mahi aroturuki, ka mutu, ka whai ripoata kauneke hei tuku ki te MAIHI Whare Wānanga, te hunga me tuku whakahoutanga ā-tau ki te Kāhui Minita.
- Ka whakamātāmua te mahere whakatinana i ngā tūmahi i roto i tēnei rautaki, ka whakarite whāinga i ngā wāhi e tika ana, ka hanga anga raraunga hei ine i te angitū me te whakarite kōrero atu anō mō ngā whakaūnga 'arotake', 'whakatika' anō hoki.
- Kia hāngai ngā mahi, kia tika hoki te whakatau i ngā hiahia nui o te wā, ko te manako ia ka arotakehia te Rautaki ia 3 tau.



**Āpitihanga:
He kimonga ki ngā
tatauranga whai
whare Māori**

The image features a solid teal background. In the lower half, there are several thin, white, wavy lines that resemble stylized waves or a topographical map. The lines are layered, with some higher than others, creating a sense of depth and movement. The text is positioned in the upper half, centered horizontally, and is rendered in a bold, white, sans-serif font.

Ngā taunakitanga ā-Kāwanatanga i whakamahia e te Māori tae rawa atu ki te Poutūterangi 2021

Kainoho Whai Kāinga ā-Tūmatanui	O te 72,079 apataki kairēti whare tūmatanui, 37 paihēneti he Māori, 23 paihēneti he Pākehā.
Kaitono rēhita Whai Whare	Ko te Māori te mātāwaka ka kaha whākina i te Rēhita Whai Whare, e 49 paihēneti (11,699 kaitono)
Kaitono rēhita Whakawhiti	Ko te Māori te mātāwaka ka kaha whākina-motuhaketa i te Whakawhititanga, e 44 paihēneti (1,985 kaitono).
Toitūtanga Rētitanga	812 households are actively participating in the programme currently and 40 percent (328) of them are Māori.
Hōtaka Whai Whare Tuatahi	3,396 ngā whare kua whai wāhi ki te hōtaka. 58% ngā tāngata, he Māori.
Turukitanga Wāhi Noho	110,418 ngā Māori i whiwhi i te turukitanga wāhi noho – e 31 paihēneti tēnei o ngā 360,549 apataki katoa.
Karāti Whāinga Motuhake Nōhanga Ohotata (EH-SNG)	I te hauwhā ki Poutūterangi 2021, 19,455 ngā karāti i tukuna ki te Māori (tōna \$44m), e 57 paihēneti tēnei o ngā karāti katoa i te hauwhā (tōna \$78m). Ko te nama taurite o ngā wiki karapīpiti i whai EH-SNG ngā Māori ko te 14.3, he 12.7 mō ngā uri toto Māori-kore.

Kaiwhakarato whare

Kaiwhakarato Whai Whare Hapori Rēhita Māori	18 ngā CHP kaupapa Māori kua rēhita i roto i te 60 CHP (30 paihēneti o te katoa) (Paengawhāwhā 2021) 1518 ō rātau whare, ā, ka tuku i ngā IRRS rētitanga 1312 (13.2 paihēneti o te katoa)
Kaiwhakarato Nōhanga Whakawhiti	Kāore mātau i te kohi i ēnei raraunga mā ngā mātāwaka.

Te hoko kāinga

I te tau 2018, 47 paihēneti o ngā Māori i noho i roto i ētahi whare nā rātau anō i hoko. 64 paihēneti o ngā tāngata katoa i Aotearoa i noho i roto i ngā whare nā rātau anō i hoko.

Paihēneti o ngā tāngata e noho ana i roto i tētahi whare nā rātau anō i hoko (kei roto tarati whānau rānei), mā ngā mātāwaka

Tau	Māori	Ngā iwi o Te Moana nui a Kiwa	Ngā Āhia	Rāwhiti ki te Pito, Amerikana Rātini me ngā iwi o Āwherika	Ētahi atu	Pākehā	Tapeke
2006	45.2	36.6	60.6	36.9	77.4	71.4	66.6
2013	43.1	33.1	58.4	35.7	72.3	70.1	64.0
2018	47.2	35.1	58.9	37.5	67.3	70.6	64.3

Pūtake: Census data available from <https://catalogue.data.govt.nz/dataset/census-2006-2013-2018-tenure-by-ethnicity> and <https://www.stats.govt.nz/reports/changes-in-home-ownership-patterns-1986-2013-focus-on-maori-and-pacific-people>

Hai whakamōhio: Ko te tapeketanga o ngā tauranga katoa ēnei. Kei ēnei ko ngā tāngata i tuku mai i ō rātau iwi, mehemea kotahi anake nei, ā, mehemea neke atu rānei. Mehemea te tangata i tuku mai i ngā iwi neke atu i te mea kotahi, ka uru rātau ki aua iwi katoa. Kei te rōpūtanga MELAA ngā iwi o te Middle East, Amerikana Rātini me ngā iwi o Āwherika.

Rerekētanga o ngā ine hoko kāinga matua

Whakamāramatanga	Kōrero	Tatauranga	Tikanga
Māori e noho ana i roto i tētahi whare nā rātau anō i hoko (i ōna wā ka kīia he kāinga kua hokona)	Koinei te ine e whāia ana: He pai ake ngā hua whai whare, i te nuinga o te wā, mō te hunga e noho ana i roto i tētahi whare nā rātau anō i hoko. Heoi anō ka huna pea i ngā pānga o te noho kōpā.	Māori 47.2% Pākehā Aotearoa 70.6% Te katoa o Aotearoa ('taupori matua') 64.3%	Mēnā i noho tētahi i roto i tētahi whare i hokona e tētahi i noho i roto i te whare, i hokona me tētahi atu, kei roto i tētahi tarati whānau rānei.
Māori, takitahi nei, kua hoko whare	Kāore mātau i te āki i tēnei momo ine. Hei tauira, i te nuinga o te wā he pakeke ake te taupori Pākehā Aotearoa i te Māori, nō reira ka nui ake te rerekētanga.	Māori 15 tau te pakeke, neke atu 31.0% Pākehā Aotearoa 15 tau te pakeke, neke atu 57.9% Te katoa o Aotearoa 15 tau te pakeke, neke atu 51.8%	Mēnā i noho tētahi tangata 15 tau te pakeke, neke atu rānei, i roto i tētahi whare i hokona e ia, i hokona me tētahi atu, kei roto i tētahi tarati whānau rānei.

Rerekētanga o ngā ine hoko kāinga matua

I te tau 2018, 50 paihēneti o ngā Māori i noho i roto whare rēti (ngā wāhi i utua te rēti). 33 paihēneti o ngā tāngata katoa i Aotearoa i noho i roto whare rēti.

Paihēneti o ngā tāngata noho i roto whare rēti, mā ngā mātāwaka

Tau	Māori	Ngā iwi o Te Moana nui a Kiwa	Ngā Āhia	MELAA	Ētahi atu	Pākehā	Tapeke
2006	50.2	58.1	34.6	59.5	19.6	24.8	29.4
2013	53.3	63.9	37.1	61.4	24.9	26.8	32.6
2018	50.0	62.6	37.5	60.1	30.2	26.4	32.6

Pūtake: Census 2006 2013 2018 Tenure by Ethnicity–Datasets–data.govt.nz–discover and use data; Changes in home-ownership patterns 1986–2013: Focus on Māori and Pacific people | Stats NZ

Hai whakamōhio: Ko te tapeketanga o ngā tatauranga katoa ēnei. Kei ēnei ko ngā tāngata i tuku mai i ō rātau iwi, mehemea kotahi anake nei, ā, mehemea neke atu rānei. Mehemea te tangata i tuku mai i ngā iwi neke atu i te mea kotahi, ka uru rātau ki aua iwi katoa. Kei te rōpūtanga MELAA ngā iwi o te Middle East, Amerikanā Rātini me ngā iwi o Āwherika.

He kāinga mahana, he kāinga maroke

I te tau 2018/19, 50 paihēneti o ngā Māori i noho i roto i tētahi kāinga mahana, kāinga maroke.

Paihēneti o ngā tāngata noho i roto i tētahi kāinga mahana, kāinga maroke hoki, mā ngā mātāwaka

Tau	Māori	Ngā iwi o Te Moana nui a Kiwa	Ngā Āhia	MELAA/ Ētahi atu	Pākehā	Tapeke
2017/18	46.1	45.0	69.4	64.0	66.6	62.5
2018/19	50.2	41.0	65.7	58.2	67.7	63.7

Pūtake: <https://catalogue.data.govt.nz/dataset/household-economic-survey-17-18-warm-and-dry> and <https://catalogue.data.govt.nz/dataset/household-economic-survey-2018-19-warm-and-dry-including-maori-households>

He pūrongo i āta mahia ai, ā, he mea raihana e Stats NZ kia whakamahia anō ai i raro i te Creative Commons Attribution 4.0 International licence.

Hai whakamōhio: Ko te tapeketanga o ngā tatauranga katoa ēnei. Kei ēnei ko ngā tāngata i tuku mai i ō rātau iwi, mehemea kotahi anake nei, ā, mehemea neke atu rānei. Mehemea te tangata i tuku mai i ngā iwi neke atu i te mea kotahi, ka uru rātau ki aua iwi katoa. Kei te rōpūtanga MELAA ngā iwi o te Middle East, Amerikana Rātini me ngā iwi o Āwherika.

I te tau 2018, 13 paihēneti o ngā Māori i noho i roto i tētahi whare kōpā; 8 paihēneti i noho i roto i tētahi whare kōpā rawa atu.

Noho Kōpā

I te tau 2018, 13 paihēneti o ngā Māori i noho i roto i tētahi whare kōpā; 8 paihēneti i noho i roto i tētahi whare kōpā rawa atu.

Paihēneti o ngā tāngata whai whakapapa Māori e noho ana ki rō whare kōpā

Te Paerewa Kainoho ā-Motu o Kānata – 2006, 2013, 2018 Kaute Nui ā-Motu	2006	2013	2018
Paihēneti o ngā tāngata whai whakapapa Māori e noho ana ki tētahi whare tino kōpā rawa atu	8	7	8
Paihēneti o ngā tāngata whai whakapapa Māori e noho ana ki tētahi whare kōpā	15	13	13

Pūtake: Census data available from <https://www.stats.govt.nz/reports/living-in-a-crowded-house-exploring-the-ethnicity-and-well-being-of-people-in-crowded-households> and <https://www.stats.govt.nz/news/almost-1-in-9-people-live-in-a-crowded-house>

Pūtake: 2017/18 Household Economic Survey available from Household Economic Survey 2017-18 Warm and Dry-Datasets-data.govt.nz-discover and use data and 2018/19 Household Economic Survey available from Household Economic Survey 2018-19 Warm and Dry, including Māori households-Datasets-data.govt.nz-discover and use data

Ngā Tatauranga Whakatiki Whai Whare Patapatai Youth19

Ko te Youth19 te patapatai hou o roto mai i te raupapa Youth2000 o ngā patapatai hauora me te ora o ngā taiohi i Aotearoa. 7,721 ngā taiohi nō ngā kura 49 o Tāmaki Makaurau, Te Tai Tokerau me Waikato, waihoki ngā kura kaupapa Māori, i patapataihia e Youth19, i te tau kura 2019. Ko ngā taurira i te kura nō ngā tau 9 ki te 13; 1,528 (19.8 paihēneti) o ngā taurira he Māori.

He tohu ēnei i kohia e ngā kairangahau hei whakaahua i te *whakatikitanga whai whare* – me uaua ka whai wāhi atu ki ngā āhuatanga whai whare ruarua nei.

Ngā tohu whakatikitanga whai whare	Whakamāramatanga
Whakatikitanga whai whare kino	Ngā rangatahi ka mate ki te moe i runga i ngā hōpa, i ngā whare maha rānei; ka noho ki rō mōtēra, wharenoho, marae, kāinga noho, nōhanga ohotata rānei, ka noho ki roto motokā, wēne rānei i te korenga i āhei ki te utu whare, ki te whai whare rānei, māna he iti nō te wāhi tuwhera i ngā marama 12 kua hipa. Kāore i whai wāhi mai ko ngā hararei me ngā nōhanga rangitahi.
Āhuatanga whare kāore i te pai	Ka whai wāhi mai ko ngā whakatikitanga whai whare kino, me ngā rangatahi ka mate ki te noho ki rō kapene, wēne-noho, wharau rānei, he karāti, hōpa, papa rānei, he moenga rānei me tētahi atu nā te mea kāore he wāhi atu anō hei moe, ka mutu kāore te whānau i āhei ki te utu whare, ki te whai whare rānei, māna he iti nō te wāhi tuwhera i ngā marama 12 kua hipa. Kāore i whai wāhi mai ko ngā hararei me ngā nōhanga rangitahi.
Ka noho wehe ngā whānau nā ngā āhuatanga whai whare kāore i te pai.	Ko ētahi o te whānau me noho ki roto i tētahi whare, ā, ko te toenga ka mate ki te noho ki wāhi kē nā ngā raru whai whare.
Māharaharatanga utu whare	Ka māharahara ngā mātua, ngā kaitiaki rānei, i te nuinga o te wā, i ngā wā katoa rānei, i te āhua ki te iti o te moni hei utu rēti, mōkete rānei.
He rite tonu te nuku whare	Ka rua, neke atu rānei ngā hūnukutanga whare i ngā marama 12 kua hipa.

Neke atu i te hauwhā (29%) o te hunga i patapataihia i whāki i rongo rātau i tētahi momo whakatikitanga whare i ngā marama 12 kua hipa:

- 1 i roto i te 10 taurira i whāki atu kāore o rātau kāinga i pai, ka mate rātau ki te moe i runga papa, hōpa, karāti rānei, ka tohatoha moenga rānei me ētahi atu o te whānau nā te mea kāore he wāhi atu anō hei moe mā rātau.
- 2 i roto i te 100 taurira i whāki atu i noho rātau i ngā whakatikitanga whai whare kino, arā, e noho ana i rō kāinga ohore, marae, kāinga noho, motokā, wēne rānei, nā te mea kāore he kōwhiringa atu anō mō rātau, mō tō rātau whānau hoki.
- 1 i roto i te 7 taurira i whāki atu ka māharahara ngā whānau i te nuinga o te wā, i ngā wā katoa rānei, i te āhua ki ngā utu whare.
- 1 i roto i te 10 taurira i whāki atu i mate tō rātau whānau ki te noho wehe nā te iti o te whare.

Kāore te whānuitanga o ngā āhuatanga whakatikitanga whare i ōrite i waenganui i ngā rangatahi:

5. Neke atu i te 2 o roto i te 5 ngā rangatahi Māori me ngā uri o Te Moana-nui-a-Kiwa i wheako i te whakatikitanga whare. He 1 i roto i te 5 tēnei mō ngā Pākehā me ētahi atu rangatahi iwi Pākehā.
6. Neke atu i te kotahi hauroru o ngā rangatahi hauā kua wheako i te whakatikitanga whare, tērā i te hauwhā, paku neke atu, o te hunga hauātanga-kore.
7. He nui rawa atu hoki te wheakohia o ngā āhuatanga whakatikitanga whare e ngā rangatahi Uenuku, takatāpui hoki (LGBTQI+), tērā i o rātau hoa uenuku-kore.
8. Kāore he rerekētanga whakatikitanga whare i kitea i waenganui i ngā rangatahi taiwhenua me ngā rangatahi tāone.

He hōnonga tō te whakatikitanga whare ki ngā āhuatanga hauora ngoikore:

9. Kāore ngā rangatahi kua wheako i ngā whakatikitanga whare i ngā marama 12 kua hipa nei, i tino whāki atu i te hauora pai, ā, kāore i tino pai te whai wāhitanga atu ki ngā kumanu-oranga i tērā o te hunga kāore i wheako whakatikitanga whare.
10. He hōnonga nui tō te whakatikitanga whare ki te hauora hinengaro ngoikore. Kāore ngā taurira kua wheako whakatikitanga whare i tino whāki atu i ngā hōnonga pai, i te nui o te wā whānau, i te pai o te noho whānau, i te whai māngai i te whānau hei taringa me te noho haumaruru i te kāinga.
11. Kāore ngā taurira kua wheako whakatikitanga whare i tino whāki atu i te whai hōnonga i te kura, i te noho haumaruru i te kura me te whai māngai i te kura hei taringa.

12. I kaha ake tā ngā rangatahi kua wheako whakatikitanga whare whai whakakino, wheako whakahāweatanga mātāwaka, me te kore i tino rongō i te haumarū o te noho i roto i te hapori.

Pūtake: The University of Auckland, Te Herenga Waka Victoria University of Wellington, University of Otago, Auckland University of Technology. (2021). Youth19 – Housing deprivation brief. Available from <https://static1.squarespace.com/static/5bdbb75ccef37259122e59aa/t/60b5f75cbe5ecf21b37bb414/1622538079252/Youth19-housing-deprivation-brief-FINAL.pdf>

He iti te wāhi ki ngā rawa matua o ia rā i ngā whare

I te tau 2018, 5.2 paihēneti o ngā whare tūmataiti katoa (78,900) kāore i tino whai wāhi atu i te korenga o tētahi o ngā rawa whare matua e ono o ia rā whare matua (22,647 noa iho o ēnei he whare kaha) – he wai kōrere hei inu, he hiko, he wāhi tunu kai, he puoto kīhini, he tāpu, he hīrere rānei, me tētahi heketua. Ko te rawa i kaha whākina atu i te tamōtanga ko te wai kōrere hei inu (3.2 paihēneti o ngā whare) i muri mai ko te hiko (1.7 paihēneti o ngā whare).

He nui ngā rerekētanga i waenganui i ngā mātāwaka i te āhua ki te hunga kāore i tino whai wāhi atu ki ngā rawa whare matua o ia rā (11.3 paihēneti o ngā uri o Te Moananui-a-Kiwa, 9.2 paihēneti o ngā uri o Haina, 8.6 paihēneti o ngā tāngata MEELA, 6.9 paihēneti o ngā Māori, engari 4.4 paihēneti o Ērā Atu, ā, 34 paihēneti noa iho o ngā rōpū mātāwaka Pākehā).

Haurua o ngā whare kāore i tino whai wāhi atu ki ngā rawa whare matua o ia rā he whare rēti, ā, paku neke atu i te kotahi o roto i te tekau tāngata e noho ana i roto i ngā whare kāore i tino whai wāhi atu ki ngā rawa whare matua o ia rā, i noho i rō whare rēti tūmatanui.

Kua roa te raru wai inu pai e kōrerotia ana i ngā rohe taiwhenua o Aotearoa pēnei i Te Tai Tokerau, i te Waiariki me te Tairāwhiti, i ngā tau whā tekau nei. Heoi anō, i kohia tuatahitia ēnei raraunga i te tau 2018 e te Kaute Nui ā-Motu.

Kei roto i ngā mahi whanake i te kōunga o te wai inu a te Manatū Hauora ko te whanaketanga o tētahi pūnaha whakariterite kaha mō te wai inu me te whakatūnga o te Taumata Arowai – te Kaiwhakariterite Ratonga Wai, he mea whakatū i te tau nei.

Whakatikitanga Whai Whare Kino Rawa Atu – Pipiri 2021 ngā whakahounga ki ngā tatauanga 2018

Ka whakapūmau ngā whakapae i te 6 o Poutūterangi 2018, kāore i iti iho i te 102,123 tāngata e wheako ana i ngā āhuatanga whakatikitanga whai whare kino rawa atu puta noa i ngā wāhanga e whā (217.3 ia 10,000). Ka whai wāhi atu ko ngā 28,206 Māori (363.6 ia 10,000).

- Kei roto i te katoa o ngā Māori ko ngā: 900 tāngata i kīia e noho wharau-kore ana (i ngā tiriti, whare hanga noa – pēnei i ngā motokā – me ngā whare hāereere).
- 1,089 tāngata i noho i rō kāinga taupua (wharau pō, whakaruruhau wāhine, nōhanga whakawhiti, whenua hopuni, whare noho, hōtēra, mōtēra, paepae me ngā marae).
- 10,890 tāngata i noho tahi, i noho me ētahi atu i roto i ngā whare kōpā rawa atu.
- 15,327 tāngata i noho i rō whare me kaua e noho i te korenga o tētahi o ngā rawa whare matua e ono o ia rā: he wai kōrere hei inu, he hiko, he wāhi tunu kai, he puoto kīhini, he tāpu, he hīrere rānei, me tētahi heketua.

Kei te Work undertaken on Housing that Lacks Basic Amenities nā Viggers rātau ko Amore, ko Howden-Chapman, te whānuitanga atu o te matapae mō te tau 2018 e pā ana ki te Whakatikitanga Whai Whare Kino Rawa Atu, me ētahi atu whakamārama mō ngā whare kāore i taea te nohoia. Nā te honotanga mai o ngā tāngata 60,000 ki te wāhanga noho whare me kaua e noho i piki ake ai te tokomaha o ngā tāngata noho taumarumarū kore, i ngā nohonga taupua rānei, ā, e noho tahi nei rānei me ētahi atu (ko tēnei tapeketanga i matapaetia i te takiwā o te 42,000) ko tōna tapeketanga ko te 102,000 ngā tāngata, rua pai hēneti rānei o te taupori, e meatia nei kua tino pāngia nei ki te whakatikitanga whai whare kino rawa atu.

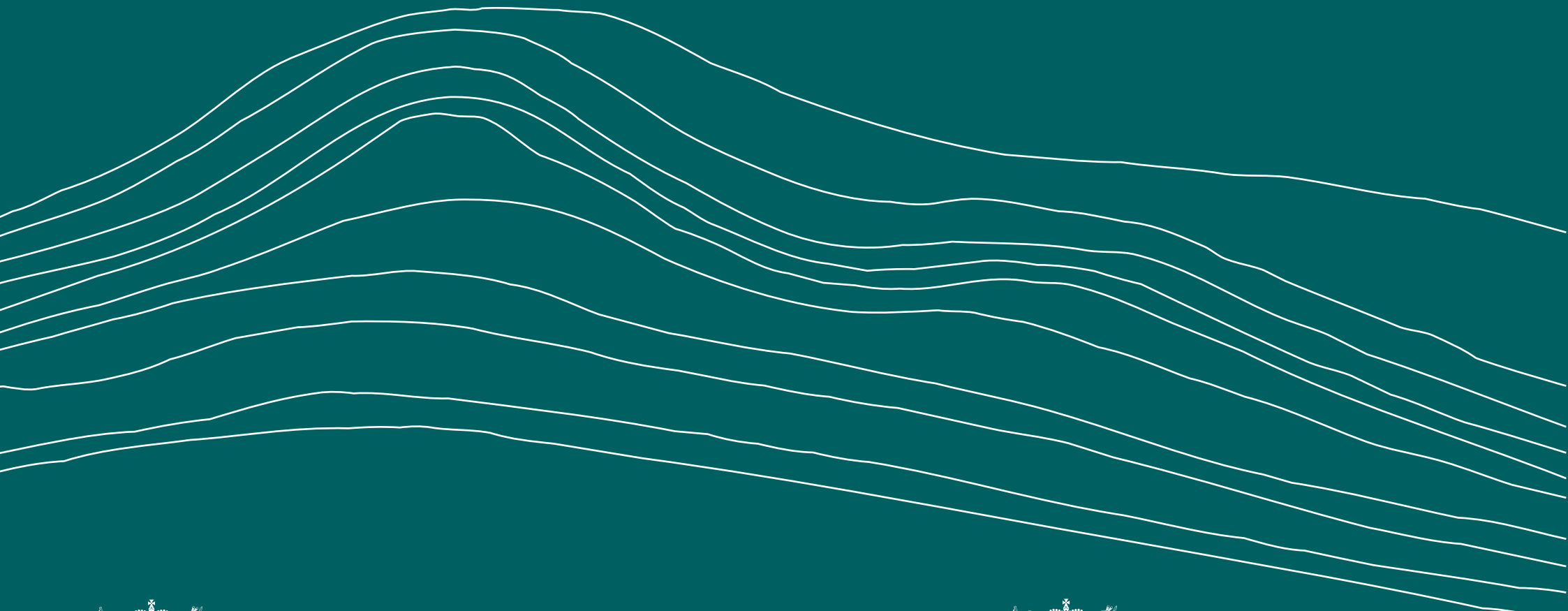
Pūtake: Viggers, H. Amore, K. Howden-Chapman, P. (2021). Housing that Lacks Basic Amenities in Aotearoa New Zealand, 2018: A supplement to the 2018 Census Estimate of Severe Housing Deprivation. Available from <https://www.healthyhousing.org.nz/wp-content/uploads/2021/05/Housing-that-Lacks-Basic-Amenities-in-Aotearoa-New-Zealand-2018.pdf>

Ka whakaatu ēnei tatauanga i te horopaki i te tau 2018, ka mutu kāore i te whakaahua i te pānga o ngā āhuatanga hou, ngā kaupapa here, te pānga o te KOWHEORI-19 rānei.

He tokomaha ngā tamariki o te pakeketanga 0 ki te 14 (10,302) i noho i roto whare whakatikitanga kino rawa atu.

Pūtake: Amore, K., Viggers, H., Howden-Chapman, P. (2021). Severe housing deprivation in Aotearoa New Zealand, 2018: June 2021 update. Available from <https://www.hud.govt.nz/research-and-publications/statistics-and-research/2018-severe-housing-deprivation-estimate/>





Te Kāwanatanga o Aotearoa
New Zealand Government



Te Tūāpapa Kura Kāinga
Ministry of Housing and Urban Development