

Māori housing investment

Budget 2021 will invest \$380 million into Māori housing across Aotearoa New Zealand, delivering additional new houses, whare repairs, and capability building. The investment will enable new affordable rentals, transitional housing, papakāinga, and progressive home ownership solutions.

In addition, \$350 million from the \$3.8b Housing Acceleration Fund has been set aside for a Māori Infrastructure Fund to help to unlock whenua Māori potential.

The investments build on that from Budget 2019 and 2020.

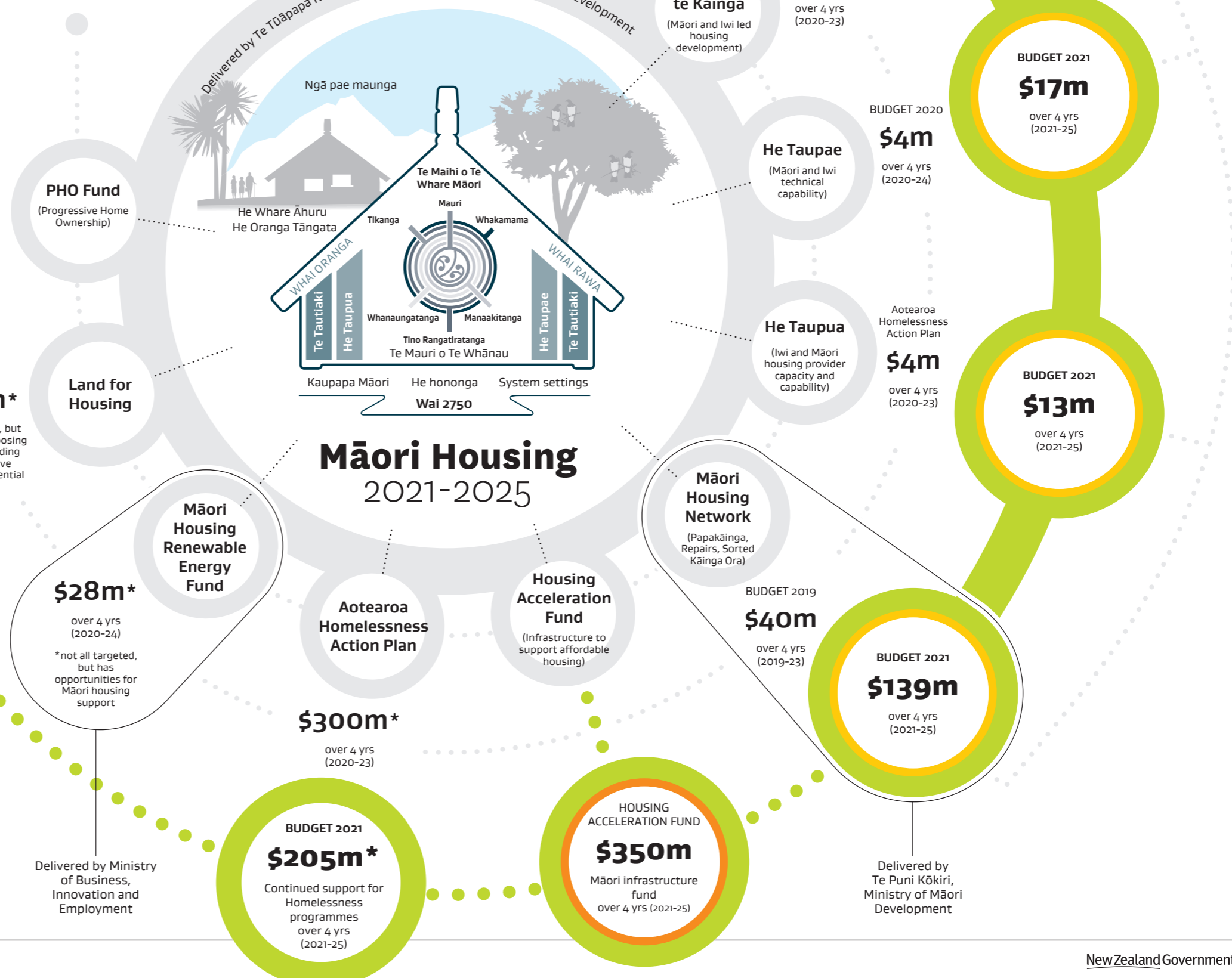
*not all targeted to Māori housing

Key

Budget 2021

Budget 2019-20

Plan



TOTAL BUDGET 2021

BUDGET 2021
\$380m
Whai Kāinga Whai Oranga

HOUSING ACCELERATION FUND
\$350m
Māori infrastructure fund